



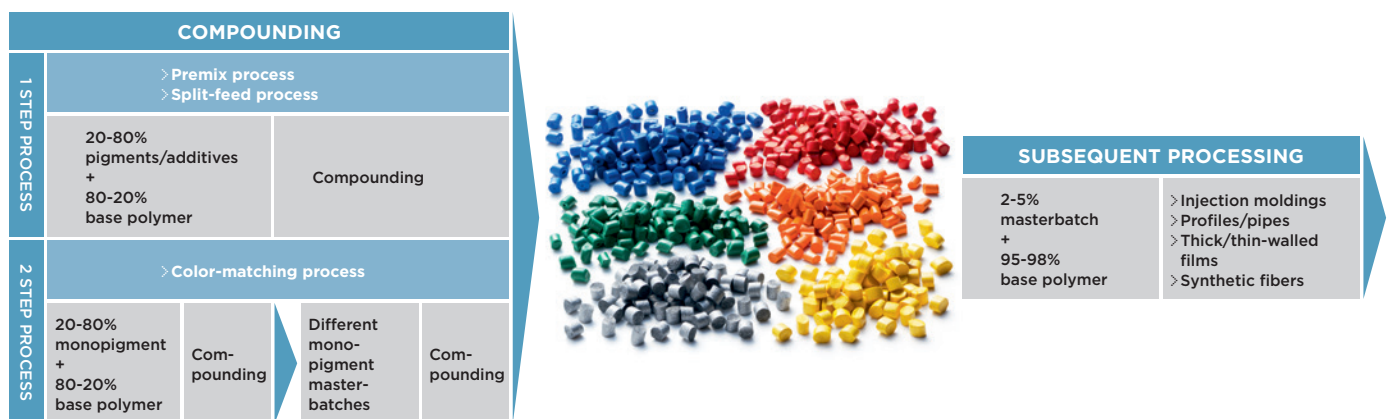
Masterbatch Compounding. First class technology from Coperion for a very demanding compounding process.

»» Quality is our benchmark. The processing of masterbatch puts high demands on the compounding process: After all, the pigment and additive components must be incorporated into the polymer matrix absolutely homogeneously. Because of its excellent mixing properties and the gentle product handling, the co-rotating twin screw extruders from Coperion are particularly suitable for this compounding task.

The twin screw compounders from Coperion have proven themselves in the processing of masterbatch for many years. Both the ZSK Mc¹⁸ and the ZSK Mv PLUS series as well as the STS Mc¹¹ twin screw extruders are used for this compounding process. We design – depending on the masterbatch recipe – all processing steps exactly to your requirements. Metering, feeding, conveying, melting, dispersing, homogenizing, devolatilizing, pressurizing, filtering and pelletizing. This gives you exactly what you can expect: a compounding system that is optimally tailored to your process needs.

From laboratory extruder to production scale machine with high throughput rates, the Coperion twin screw extruders all operate with maximum productivity. Special developed features such as the feed hopper with quick-release clamps, the masterbatch die head or the easy-to-clean side feeder ZS-B ensure fast, easy cleaning of the extruders and therefore economical recipe and color changes.

Compounding and subsequent processing of pigment and additive masterbatch





»» Compounding of masterbatch. The term masterbatch includes concentrates of pigments or additives in a polymer matrix. Masterbatch is mainly available in the form of standard pellets but also in the form of mini-pellets. A distinction is made between white, black and colored masterbatch depending on the pigment type. The premix, split-feed and color-matching processes are available for compounding masterbatch.

PREMIX PROCESS

In the premix process all masterbatch raw material components are first mixed homogeneously in a mixer. Then, normally via a volumetric feeder, this mixture is fed into the twin screw extruder where it is processed.

Advantages of Coperion extruders

- » Excellent dispersion at high throughput rates
- » High pigment and additive loading levels are possible
- » Very simple machine operation
- » Long lifetime of screw and barrel parts due to specially developed screw elements
- » Fast and therefore economical color changes

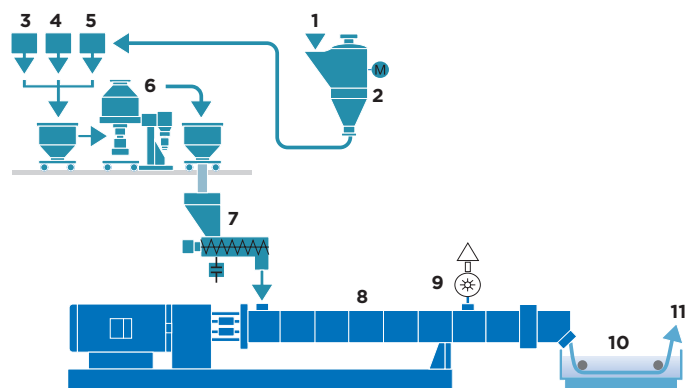
Recipe ingredients

Base polymers: PE, PP, PS, EVA, PET, PA, PC, SAN, PMMA, ABS, TPE, POM, PEEK, etc.

Pigments/additives

Organic pigments	20-40%
Inorganic pigments	40-60%
Carbon black	15-40%
TiO ₂	50-70%
Synthetic SiO ₂	10-30%
Natural SiO ₂	30-50%
Low melt substances such as additives (UV, antifog, antistat, etc.)	10-20%

Typical set-up for the premix process



- 1 Polymer pellets
- 2 Pellet mill
- 3 Wax
- 4 Pigments
- 5 Polymer powder
- 6 Mixer, e.g. heating-cooling mixer
- 7 Feeder
- 8 Twin screw extruder
- 9 Vacuum pump
- 10 Water bath
- 11 To the pelletizer

SPLIT-FEED PROCESS

The split-feed process is used especially for producing mono-pigment and additive masterbatch. In this process, the polymer is fed into the feed barrel of the extruder in form of pellets. The pigments are then fed gently into the extruder by a twin screw side feeder downstream of the melting zone. The components are metered separately by individual gravimetric feeders.

Advantages of Coperion extruders

- › Very high pigment and additive loading levels are possible
- › Extremely gentle wetting of the pigments thus avoiding agglomerations
- › Excellent dispersion of the pigments, e.g. for fiber applications
- › Fast and therefore economical color changes
- › High throughput rates for maximum productivity

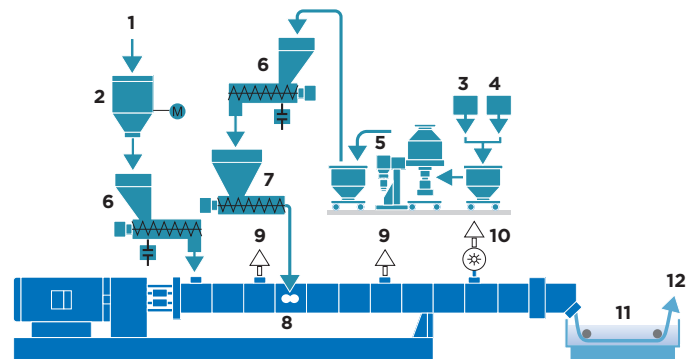
Recipe ingredients

Base polymers: PE, PP, PS, EVA, PET, PA, PC, SAN, PMMA, ABS, TPE, POM, PEEK, etc.

Pigments/additives

Organic pigments	40-60%
Inorganic pigments	50-80%
Carbon black	20-50%
TiO ₂	60-80%
Synthetic SiO ₂	20-50%
Natural SiO ₂	40-60%
Low melt substances such as additives (UV, antifog, antistat, etc.)	30-60%

Typical set-up for the split-feed process

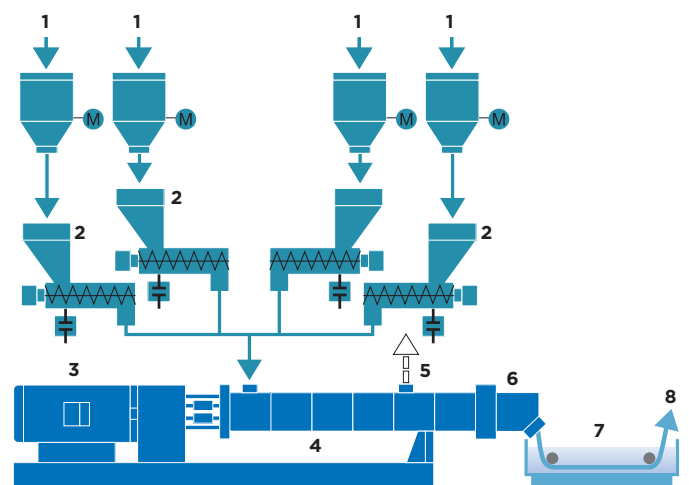


- 1 Polymer pellets
- 2 Pellet mill
- 3 Wax
- 4 Pigments
- 5 Mixer
- 6 Gravimetric feeder
- 7 Twin screw side feeder
- 8 Twin screw extruder
- 9 Degassing
- 10 Vacuum pump
- 11 Water bath
- 12 To the pelletizer

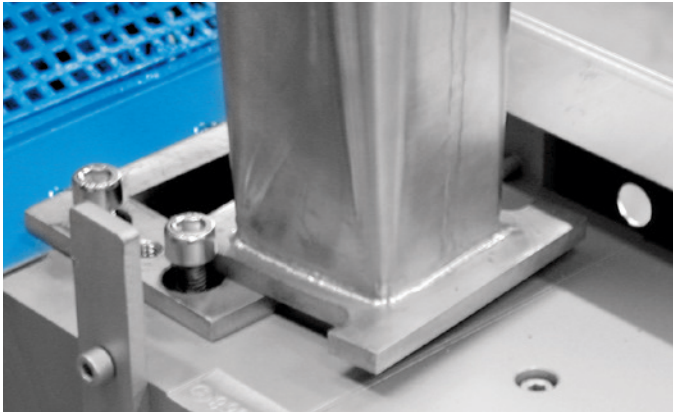
COLOR-MATCHING PROCESS

The color-matching process is used for high-end applications such as dyeing of fibers. Different monobatch pellets are fed into the extruder pre-mixed or separately. The extruder plasticizes and homogenizes them so that a masterbatch in the desired color shade is produced. Masterbatch based on the common base polymers PE, PP but also PA is used in this process.

Typical set-up for the color-matching process



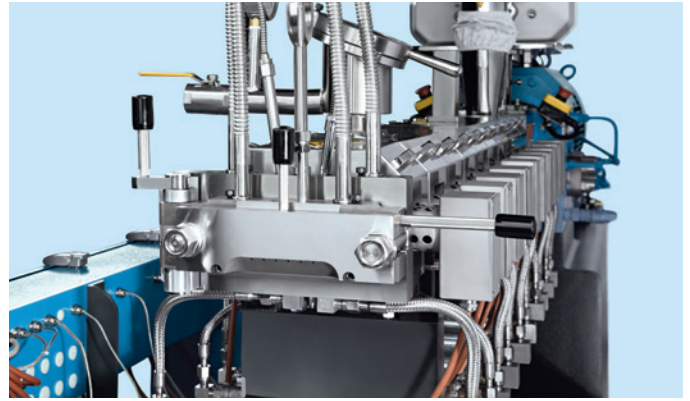
- 1 Preload hoppers for masterbatch
- 2 Pneumatic conveying to gravimetric feeders
- 3 Extruder motor and gearbox
- 4 Twin screw extruder
- 5 Degassing (vacuum pump)
- 6 Die head
- 7 Water bath
- 8 To Pelletizer



> QUICK-RELEASE FEED HOPPER WITH QUICK-RELEASE INSERT FOR ZSK

Feed hopper with quick-release clamps for ZSK and STS

The feed hopper is only clamped to the process section by bolts. It can be removed very quickly by simply loosening these bolts. The quick-release insert which protects the barrel wall from contamination can then be changed very easily.



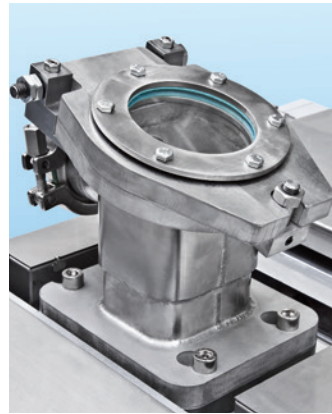
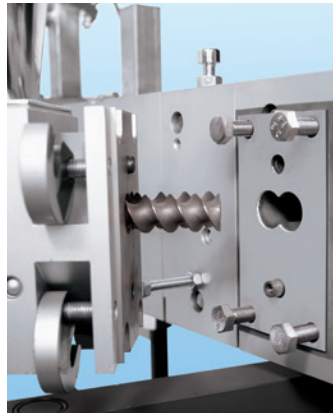
> EXTRUDER DIE HEAD OF A STS 35 Mc¹¹

Extruder die head for STS

The STS extruder die head can be swiveled aside quickly and easily by loosening just a few bolts. This ensures very good, very quick cleaning when changing colors. The optimum flow geometry of the die head enables homogeneous discharge even with highly-filled products.



> QUICK-RELEASE OF THE SIDE FEEDER FROM THE PROCESS SECTION



> QUICK CLOSURE ON THE DEGASSING DOME



> C-CLAMP AT THE CONNECTION OF THE DEGASSING DOME

Easy-clean side feeder for ZSK and STS

The twin screw side feeder enables side feeding of additives in powder or pellet form into the process section of the twin screw extruder. The side feeder can be released from the process section with a few steps for fast, effective cleaning.

Degassing dome and atmospheric venting of the ZSK Mc¹⁸ with quick closure clamps

For fast, easy cleaning both the degassing dome and the atmospheric stack of the ZSK Mc¹⁸ series are fitted with quick-release clamps. The units can be removed by loosening just four bolts. In addition, the connection of the vacuum line on the degassing dome is equipped with a quick-release c-clamp.

ZSK Mv PLUS FOR CARBON BLACK AND EFFECT PIGMENT MASTERBATCH

Due to the deep cut screw flights of the ZSK Mv PLUS with a diameter ratio D_o/D_i of 1.8 there is a very large, free screw volume. This is a big advantage especially in the production of carbon black and special effect pigment masterbatch:

- > Improved feeding of high-volume ingredients such as carbon black and pearlescent pigments
- > Very gentle handling of all recipe ingredients such as shear-sensitive pearlescent pigments
- > Low specific energy input for low melt temperatures
- > Maximum product quality

ZSK 18 MEGAlab - MAXIMUM PERFORMANCE FOR SMALL BATCH SIZES

The ZSK 18 MEGAlab laboratory extruder is based on the successful ZSK technology. It was developed especially for processing small quantities. The reliable scale-up to larger ZSK extruders make it the ideal compounding system for formulation development and basic research and development work.

Other features:

- > Throughput rates of up to 40 kg/h
- > Preparation quantities from 200 g
- > Specific torque $Md/a^3 = 11.3 \text{ Nm/cm}^3$
- > $D_o/D_i = 1.55$
- > Max. drive speed of 1,200 min^{-1}



> ZSK 18 MEGAlab IN HYGIENIC DESIGN

Throughput rates [kg/h]

ZSK Mc ¹⁸	18*	26*	32	45	58	70	82	92
Premix	3-15	10-50	20-100	50-250	120-600	200-1,100	300-1,700	400-2,000
Split-feed	5-30	25-100	50-200	150-550	300-1,100	500-2,000	800-3,200	1,000-4,500
Color-matching	20-40	75-250	150-400	400-1,100	900-2,500			
ZSK Mv PLUS	34	43	54	62	76	98		
Split-feed	100-200	200-350	400-700	600-1,000	1,100-2,000	2,300-3,500		
STS Mc¹¹	35	50	65					
	50-220	150-600	300-1,100					

* Laboratory extruders ZSK 18 MEGAlab and ZSK 26 Mc¹⁸

Coperion GmbH

Compounding & Extrusion
Theodorstrasse 10
70469 Stuttgart, Germany
Tel.: +49 711 897-0
Fax: +49 711 897-3999
info.cc-ce@coperion.com

Coperion GmbH

Materials Handling
Niederbieger Strasse 9
88250 Weingarten, Germany
Tel.: +49 751 408-0
Fax: +49 751 408-200
info.cc-mh@coperion.com

Coperion GmbH

Service
Theodorstrasse 10
70469 Stuttgart, Germany
Tel.: +49 711 897-0
Fax: +49 711 897-3999
info.cc-se@coperion.com

info@coperion.com
www.coperion.com

> Europe

Belgium, Luxembourg, Netherlands
Coperion N.V.
Industrieweg 2, 2845 Niel, Belgium
Tel.: +32 3 870-5100
Fax: +32 3 877-0710

France

Coperion S.a.r.l.
20 chemin Louis Chirpaz
Bâtiment C
69130 Ecully, France
Tel.: +33 469 848 190
Fax: +33 469 848 199

Coperion K-Tron France S.a.r.l.

56 boulevard de Courcerin
77183 Croissy-Beaubourg, France
Tel.: +33 64 801 600
Fax: +33 64 801 599

Germany

Coperion GmbH
Germany West Office
Industriestrasse 71a
50389 Wesseling, Germany
Tel.: +49 2232 20700-10
Fax: +49 2232 20700-11

Coperion Pelletizing Technology GmbH

Heinrich-Krumm-Strasse 6
63073 Offenbach, Germany
Tel.: +49 69 989 5238-0
Fax: +49 69 989 5238-25

Coperion K-Tron Deutschland GmbH

Im Steinigen Graben 10
63571 Gelnhausen, Germany
Tel.: +49 6051 9626-0
Fax: +49 6051 9626-44

Italy

Coperion S.r.l.
Via E. da Rotterdam, 25
44122 Ferrara, Italy
Tel.: +39 0532 7799-11
Fax: +39 0532 7799-80

Coperion S.r.l.

Milan Office
Via XXV Aprile, 49
20091 Bresso (MI), Italy
Tel.: +39 02 241 049-01
Fax: +39 02 241 049-22

Russian Federation, CIS

OOO Coperion
Proezd Serebryakova 14,
Bld. 15, Office 219
129343 Moscow, Russian Federation
Tel.: +7 499 258 4206
Fax: +7 499 258 4206

Spain, Portugal

Coperion, S.L.
Balmes, 73, pral.
08007 Barcelona, Spain
Tel.: +34 93 45173-37
Fax: +34 93 45175-32

Sweden, Denmark, Finland, Norway

Coperion AB
Linnégatan 81
SE-114 60 Stockholm, Sweden
Tel.: +46 8 608-1818

Switzerland

Coperion K-Tron (Schweiz) GmbH
Lenzhardweg 43/45
5702 Niederlenz, Switzerland
Tel.: +41 62 8857-171
Fax: +41 62 8857-180

United Kingdom

Coperion Ltd.
Coperion K-Tron Great Britain Ltd.
Unit 4, Acorn Business Park
Heaton Lane
Stockport, SK4 1AS, United Kingdom
Tel.: +44 161 209 4810
Fax: +44 161 474 0292

> Asia

China

Coperion (Nanjing) Machinery Co. Ltd.
No. 1296 Jiyin Avenue
Jiangning District
Nanjing 211106, PR China
Tel.: +86 25 5278 6288
Fax: +86 25 5261 1188

Coperion International Trading (Shanghai) Co. Ltd.

Coperion Machinery & Systems (Shanghai) Co. Ltd.
Bldg. A2, 6000 Shenzhuan Road
Dongjing Town, Songjiang District
Shanghai 201619, PR China
Tel.: +86 21 6767 9505
Fax: +86 21 6767 9108

Coperion K-Tron (Shanghai) Co. Ltd.

Building A2-A3
No. 6000 Shen Zhuan Gong Road
Songjiang District
201619 Shanghai, PR China
Tel.: +86 21 6375 7925
Fax: +86 21 6375 7930

India

Coperion Ideal Pvt. Ltd.
Ideal House, A-35, Sector 64
201307 Noida (U.P.), India
Tel.: +91 120 4299 333
Fax: +91 120 4308 583

Japan

Coperion K.K.
4F, Leaf Square Shin-Yokohama Bldg.
3-7-3, Shin-Yokohama,
Kohoku-ku Yokohama,
Kanagawa 222-0033, Japan
Tel.: +81 45 595 9801
Fax: +81 45 595 9802

Saudi Arabia

Coperion Middle East Co. Ltd.
P. O. Box 821
Jubail - 31951, Saudi Arabia
Tel.: +966 3 341 1368
Fax: +966 3 341 1052

Singapore

Coperion Pte. Ltd.
Coperion K-Tron Asia Pte. Ltd.
8 Jurong Town Hall Road
#28-01/02/03 The JTC Summit
Singapore 609434
Tel.: +65 641 88-200
Fax: +65 641 88-203

Taiwan

Coperion (Nanjing) Machinery Co. Ltd.
Taiwan Branch Office
5F, No. 43, Alley 115
Chung San North Road Sec. 2
Taipei, Taiwan
Tel.: +886 2 2521 3580
Fax: +886 2 2521 1604

> America

South America

Coperion Ltda.
R. Arinos, 1000
RBCA - Royal Business Center
Anhanguera, Módulo 4
Parque Industrial Anhanguera
06276-032 Osasco - SP, Brazil
Tel.: +55 11 3874-2740
Fax: +55 11 3874-2757

USA, Canada, Mexico, NAFTA
Coperion Corporation
590 Woodbury Glassboro Road
Sewell, NJ 08080, USA
Tel.: +1 201 327-6300
Fax: +1 201 825-6494

Coperion Corporation Wytheville Office

285 Stafford Umberger Drive
P.O. Drawer 775
Wytheville, VA 24382, USA
Tel.: +1 276 228-7717
Fax: +1 276 228-7682

Coperion Corporation Houston Office

7900 North Sam Houston Pkwy, West
Suite 202
Houston, TX 77064, USA
Tel.: +1 281 449-9944
Fax: +1 281 449-4599

Coperion K-Tron Pitman, Inc.

590 Woodbury Glassboro Road
Sewell, NJ 08080, USA
Tel.: +1 856 589-0500
Fax: +1 856 589-8113

Coperion K-Tron Salina, Inc.

606 North Front Street
Salina, KS 67401, USA
Tel.: +1 785 825-1611
Fax: +1 785 825-8759

For more information about
the worldwide Coperion network,
visit www.coperion.com