

**Contact**

Kathy Burlew  
Marketing Communications  
Coperion K-Tron Salina, Inc  
606 N Front St  
Salina, KS 67401

Telephone +1 785-825-1611  
Fax +1 785-825-8759  
kathy.burlew@coperion.com  
www.coperion.com

## Press Release

### Coperion and Coperion K-Tron at the Battery Show North America:

## From One Single Source: Continuous Manufacturing Process for an Optimized Overall Process

*Salina, KS, USA, (August 2022)* – At this year's Battery Show North America (September 13-15, 2022 in Novi, MI at the Suburban Collection Showplace), Coperion and Coperion K-Tron will present their system solutions for battery materials production at Booth 2352. The scope of these solutions encompasses the entire battery mass manufacturing process for the continuous production of battery masses. Coperion offers solutions for every process step that meets the required containment levels from bulk material handling to precise feeding and extrusion.

Coperion's primary focus is on continuous battery mass manufacturing. Coperion delivers complete systems from one single source, with which the process can be optimized. Together with high-accuracy Coperion K-Tron feeders, the Coperion ZSK twin screw extruder provides a stable process as well as high quality and reproducible end product. The extruder's higher degree of automation allows for a more cost-efficient battery cell production compared to conventional batch processes is possible.

### Twin Screw Extruder for High Product Quality

The Coperion ZSK twin screw extruder is a high-capacity extruder that excels above all in its superior mixing performance for manufacturing homogeneous electrode masses. The ZSK offers further advantages that optimize the manufacturing process such as the extruder's interlocking, intermeshing twin screws that create a constantly high conveying efficiency and optimal self-cleaning process section. This reduces the remaining material in the extruder and allows more material to the production line. Furthermore, the process section's modular

August 2022

construction enables flexible and individual modification for various recipes and changes within the process, such as the reduction or substitution of toxic solvents.

### **Reliable Feeding for High Recipe Precision**

For precise adherence to recipes and thus high product quality, using the proper feeder is an essential aspect of the overall process. Coperion K-Tron's loss-in-weight screw and liquid feeders are ideally suited for manufacturing electrode compounds and separator films, offering high accuracy, tremendous reliability, and flexibility — even when feeding ingredients with poor flow properties or even abrasive, corrosive or toxic ingredients used in manufacturing. These feeders stand out with their modern sealing design that is optimally attuned to the high demands of battery applications. Thanks to the latest weighing and control technologies, they achieve very high feeding accuracy. Optimal end product quality is thus achieved, and efficient use of expensive raw materials is ensured.

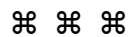
### **Entire System Concepts**

Coperion realizes entire installations for battery mass manufacturing from raw material handling and conveying to feeding and extrusion — all from one single source. In so doing, a containment concept for the entire system is developed, planned and implemented. At every step, from raw material to slurry handling, production takes place under correspondingly safe conditions. Among these, for example, are aspiration concepts or dust-tight component design. Many years of expertise in bulk solids technology, feeding and extrusion, as well as plant engineering (planning, manufacturing, assembly and commissioning), enable Coperion to deliver systems that are optimal, technically advanced, environmentally friendly and safety-focused, even for hard-to-handle bulk materials. Containment, ATEX and cleanability requirements are always considered when planning the system's design.

August 2022

### **About Coperion**

Coperion is the international market and technology leader in compounding and extrusion systems, feeding and weighing technology, bulk materials handling systems and services. Coperion designs, develops, manufactures and maintains systems, machines and components for the plastics, chemicals, pharmaceutical, food and minerals industries. Within its two divisions – Polymer and Strategic Markets / Aftermarket Sales and Service – Coperion has 2,500 employees and nearly 30 sales and service companies worldwide. Coperion K-Tron is a brand of Coperion. For more information visit [www.coperion.com](http://www.coperion.com) or email [info@coperion.com](mailto:info@coperion.com).

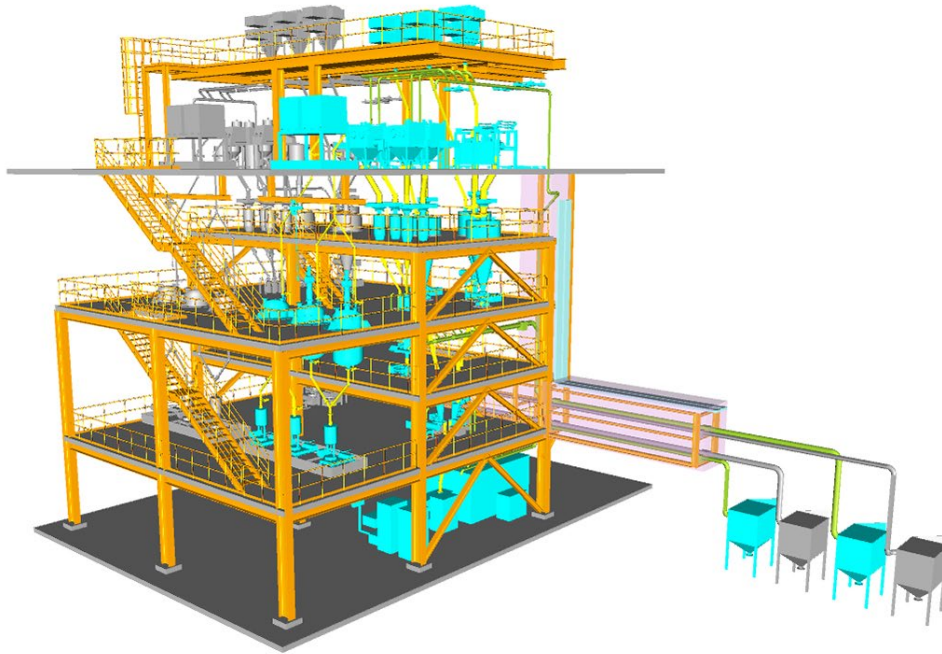


Dear Colleagues,  
You can find and download this [press release in German and English](#) and [print-ready color images](#) at  
<https://www.coperion.com/de/news-media/pressemitteilungen/>

### Editorial contact and copies:

Dr. Jörg Wolters, KONSENS Public Relations GmbH & Co. KG,  
Im Kühlen Grund 10, D-64823 Groß-Umstadt  
Tel.: +49 (0)60 78/93 63-0, Fax: +49 (0)60 78/93 63-20  
E-Mail: [mail@konsens.de](mailto:mail@konsens.de), Internet: [www.konsens.de](http://www.konsens.de)

August 2022



*Coperion offers entire installations for continuous battery mass manufacturing — from bulk material handling to feeding up to extrusion — all from one single source.*

*Photo: Coperion, Weingarten Germany*