

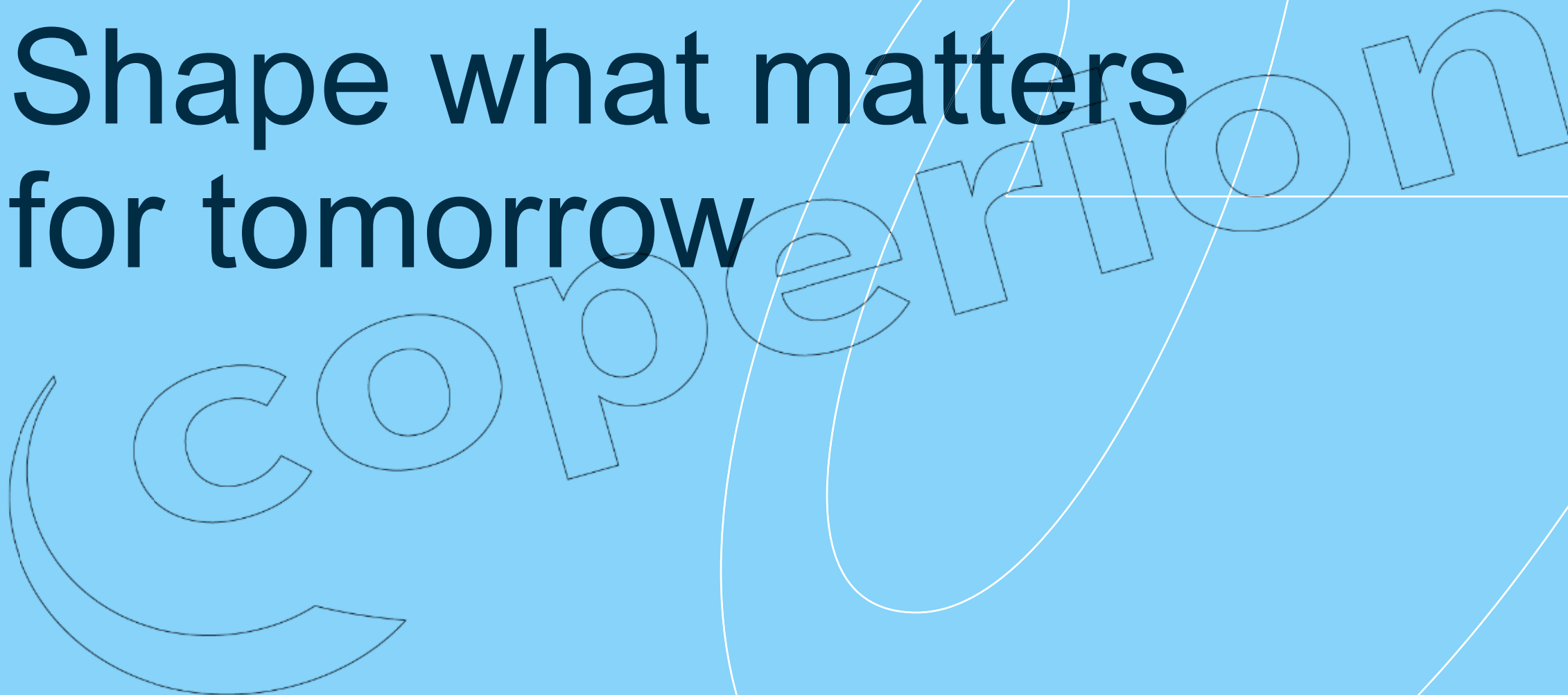


Introduction & Capabilities

Coperion Plastics Roadshow – Akron, OH

Dhruv Lad, Sales Director
October 23rd, 2025

Shape what matters for tomorrow



The world is
constantly changing,
so are we.

To be able to provide
total solutions.

For a wide range of
challenges



For more recycling
of all kinds of plastic



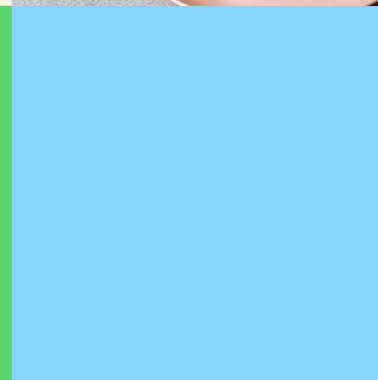
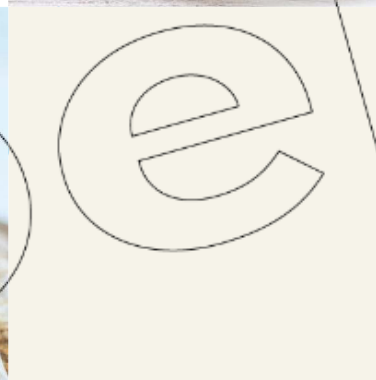
For powerful batteries
and a rapid mobility turnaround





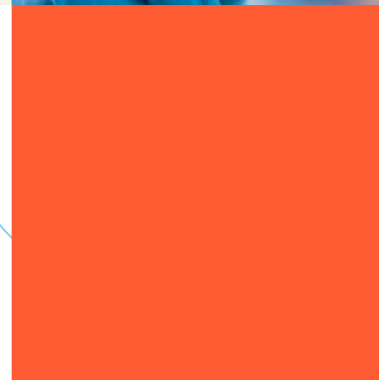
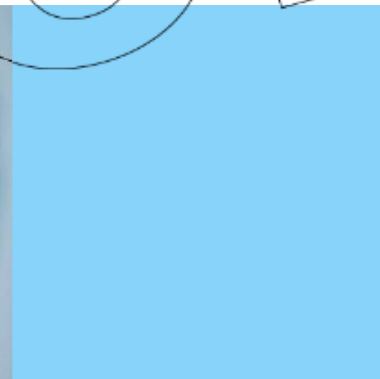
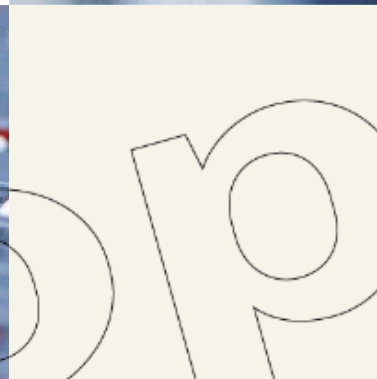
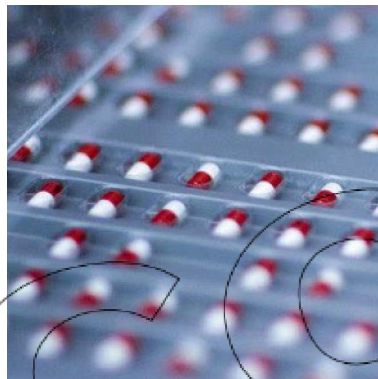
For alternative energy
production

For more food safety
and sustainability





For durability,
safety and health



We are

5 K employees

worldwide, combining engineering
expertise, quality and reliability

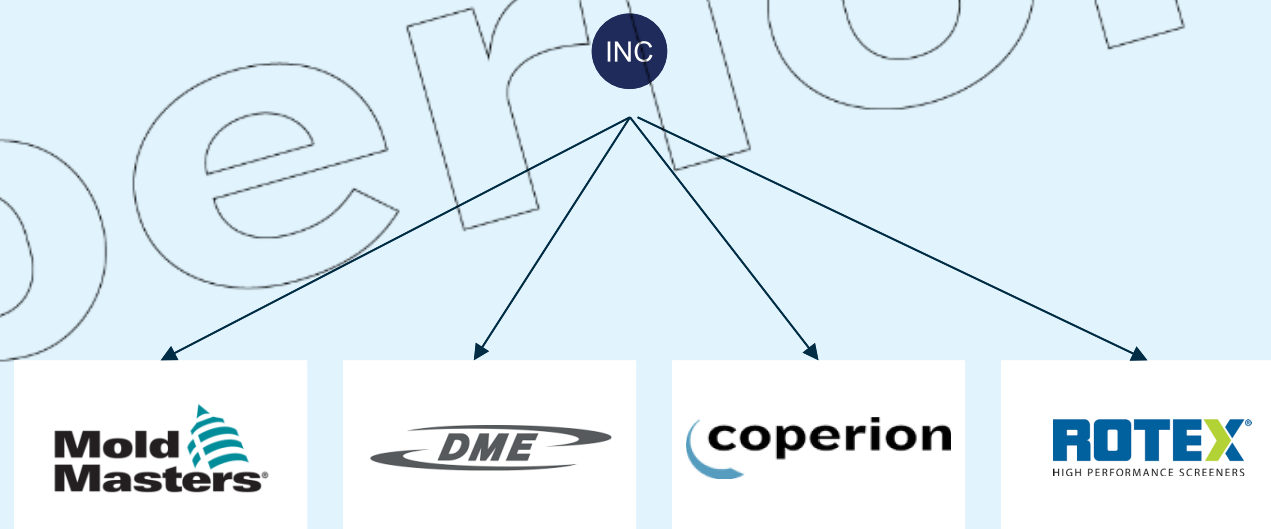
Every day our experts work on high-quality process technology – optimized for the best end products, highest efficiency and sustainability



All these experts are part of Hillenbrand, Inc.

- Strong brands with **leadership positions**
- **Highly-engineered** and mission-critical solutions
- Complementary **processing capabilities** and application expertise
- Common **manufacturing, engineering** and **procurement processes**
- Longstanding **customer relationships**
- Comprehensive **aftermarket sales services**

HILLENBRAND

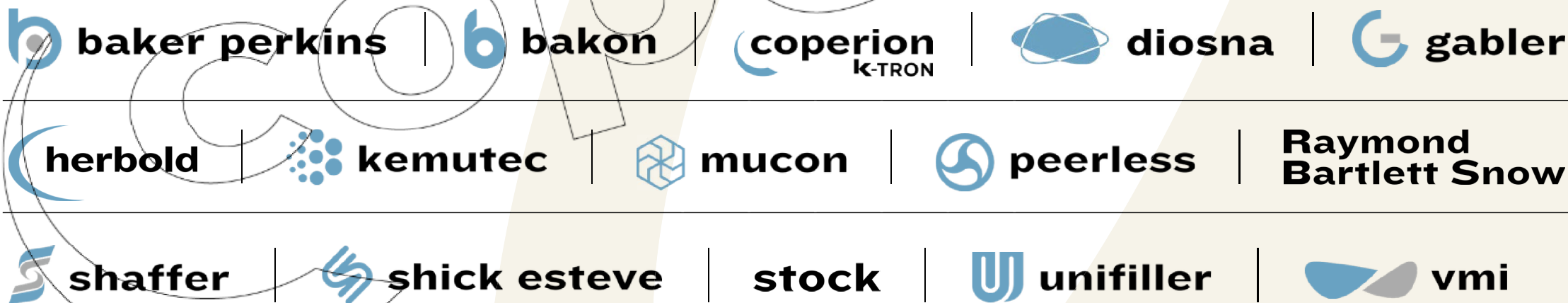


With our 15 technology brands we are perfectly set to supply you with comprehensive processing systems from a single source.



coperion

Brands of Coperion



Three divisions for first-class solutions

**Performance
Materials
Division**

**Food, Health
& Nutrition
Division**

**Aftermarket Sales
& Service
Division**

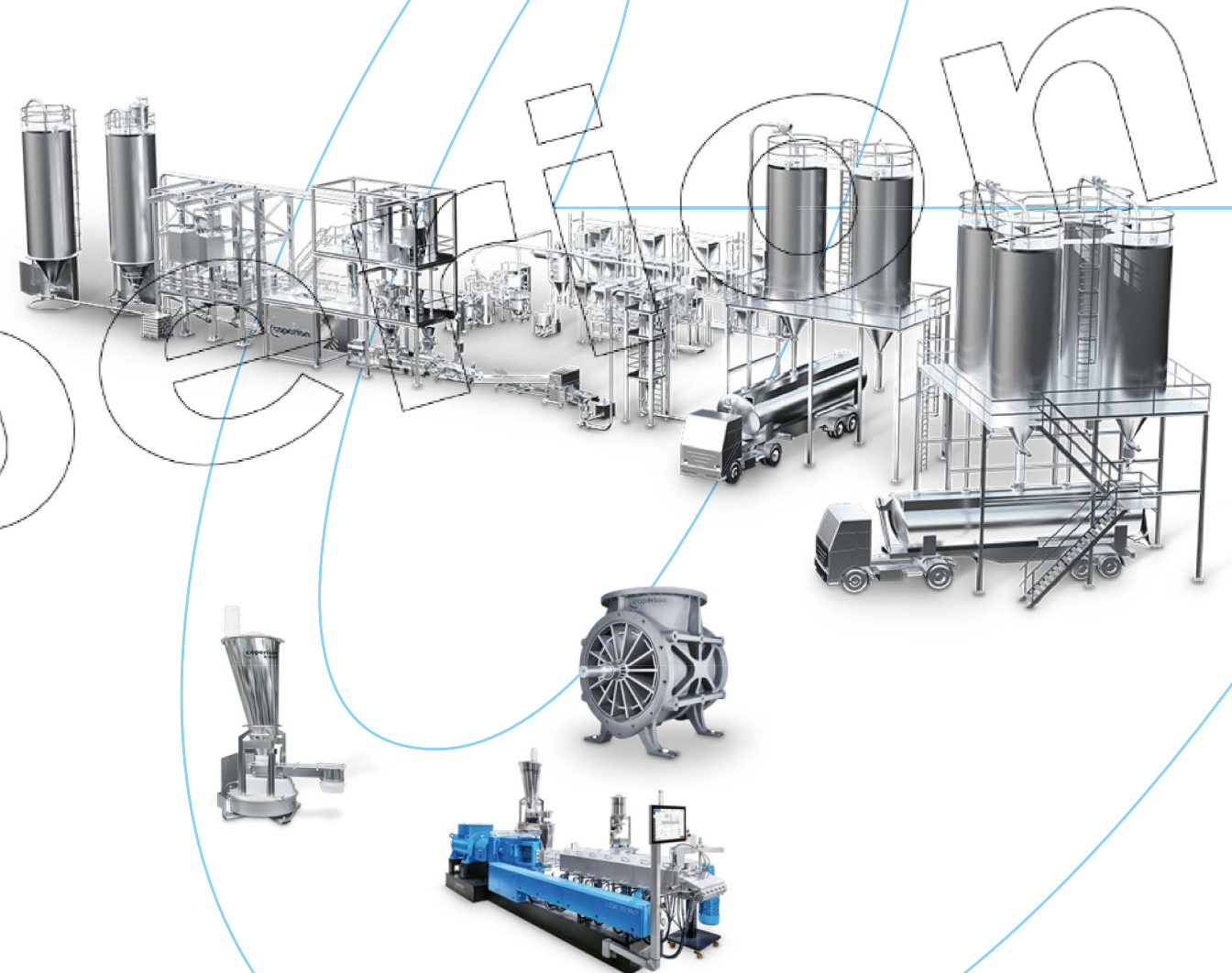
A photograph of two industrial workers, a man and a woman, in a factory setting. They are both wearing blue work shirts. The man is holding a small amount of white granular material in his hand, and the woman is looking at it with a smile. In the background, there are industrial pipes and a large bag of white granular material. A large, faint 'coperion' watermark is visible across the center of the image.

Performance Materials Division

Performance Materials Division



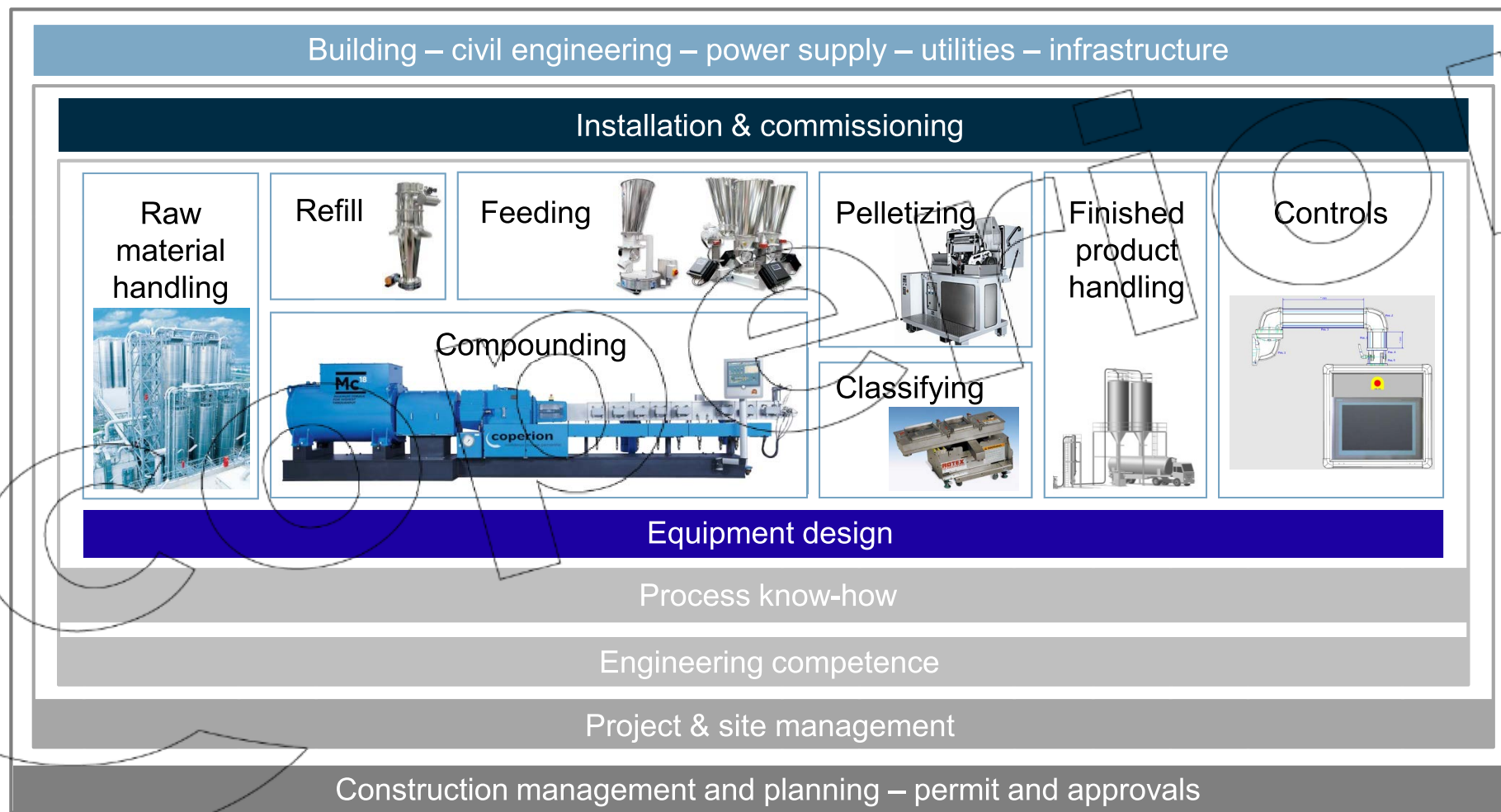
- **Plastics manufacturing systems**
- **Plastics extrusion and compounding systems**
- **Complete recycling systems** with Herbold Meckesheim
- Solutions for **batteries manufacturing**
- Technologies for the **minerals & infrastructure industry**
- Washing, separating and drying systems
- Bulk materials handling and logistic solutions
- Feeding and weighing solutions
- Compounding machines & extrusion systems
- Pelletizing systems
- Bulk materials and special process components
- Bagging and palletizing systems
- Engineering competence and process know-how



Performance Materials Division



From single components to complete turnkey systems





For high-quality end products: From single components to complete systems

Target Markets

- Polyolefin Industry
- Engineering Plastics
- Masterbatch
- PVC/HFFR
- Plastics Recycling
- Bio Plastics
- Direct Extrusion
- Battery Separator Films
- Chemical Applications
- Battery Masses
- Minerals
- Nonwovens

A large orange rectangular graphic with a white outline of the Coperion 'C' logo. Inside the orange area, the text 'Aftermarket Sales & Service Division' is written in white sans-serif font.

Aftermarket Sales & Service Division



Aftermarket Sales & Service Division



Innovative services for any industry (1/2)

- Most comprehensive service network in the industry
- Over 450 experienced service technicians and service engineers worldwide
- Emergency service
- Spare parts, incl. emergency stock
- Maintenance & repair
- Modernization to increase output, efficiency, and safety and to save energy consumption of a production system
- Remote services for easy start-up and operation



Aftermarket Sales & Service Division



Innovative services for any industry (2/2)

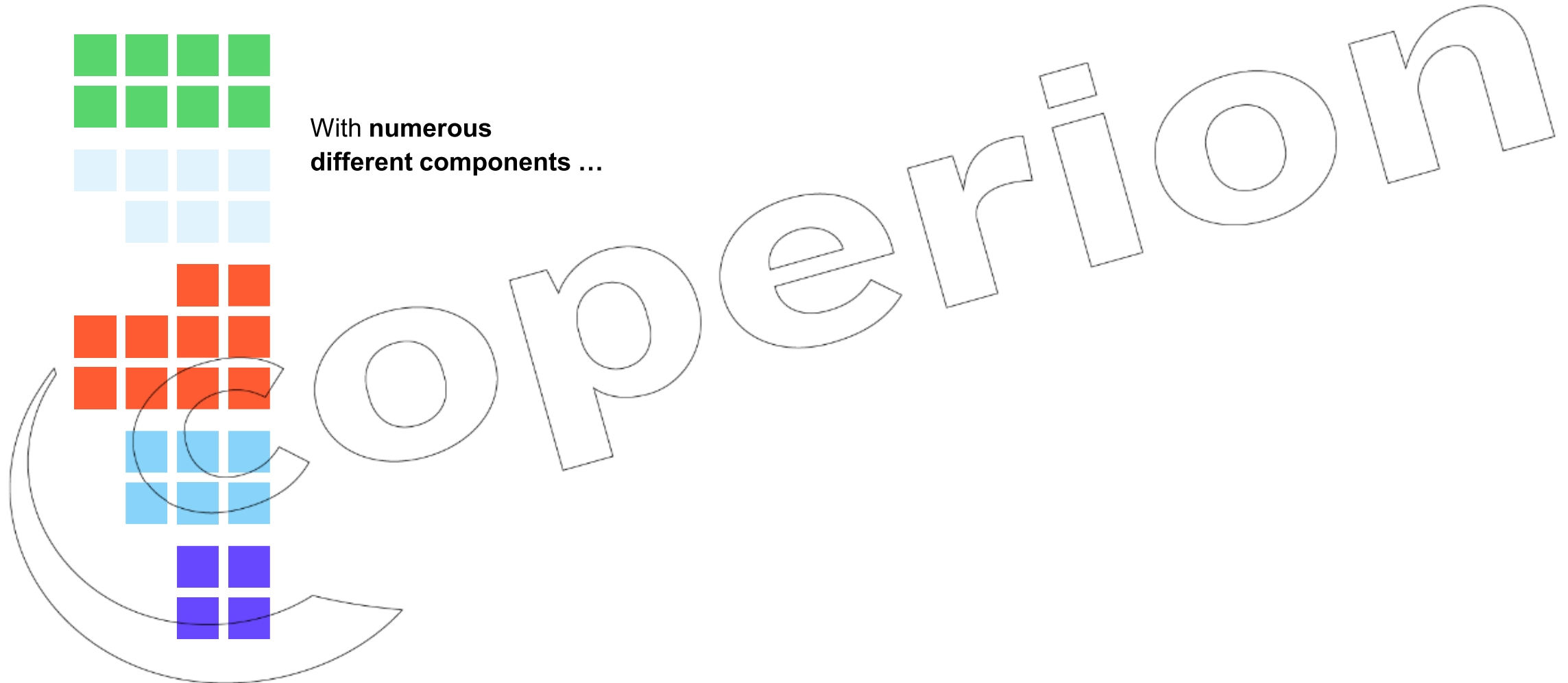
- Site management
- Service consulting
- Service agreements
- Comprehensive range of trainings
- Test Centers worldwide for a wide range of processes
- 30 years data archiving



A photograph of two men in a factory setting. The man on the left, wearing a light blue shirt and glasses, is pointing at a tablet held by the man on the right, who is wearing a dark blue sweater and glasses. They are both smiling. In the background, there is large industrial machinery, including a blue machine with a large circular opening. A large, faint, outlined 'coperion' watermark is visible across the center of the image.

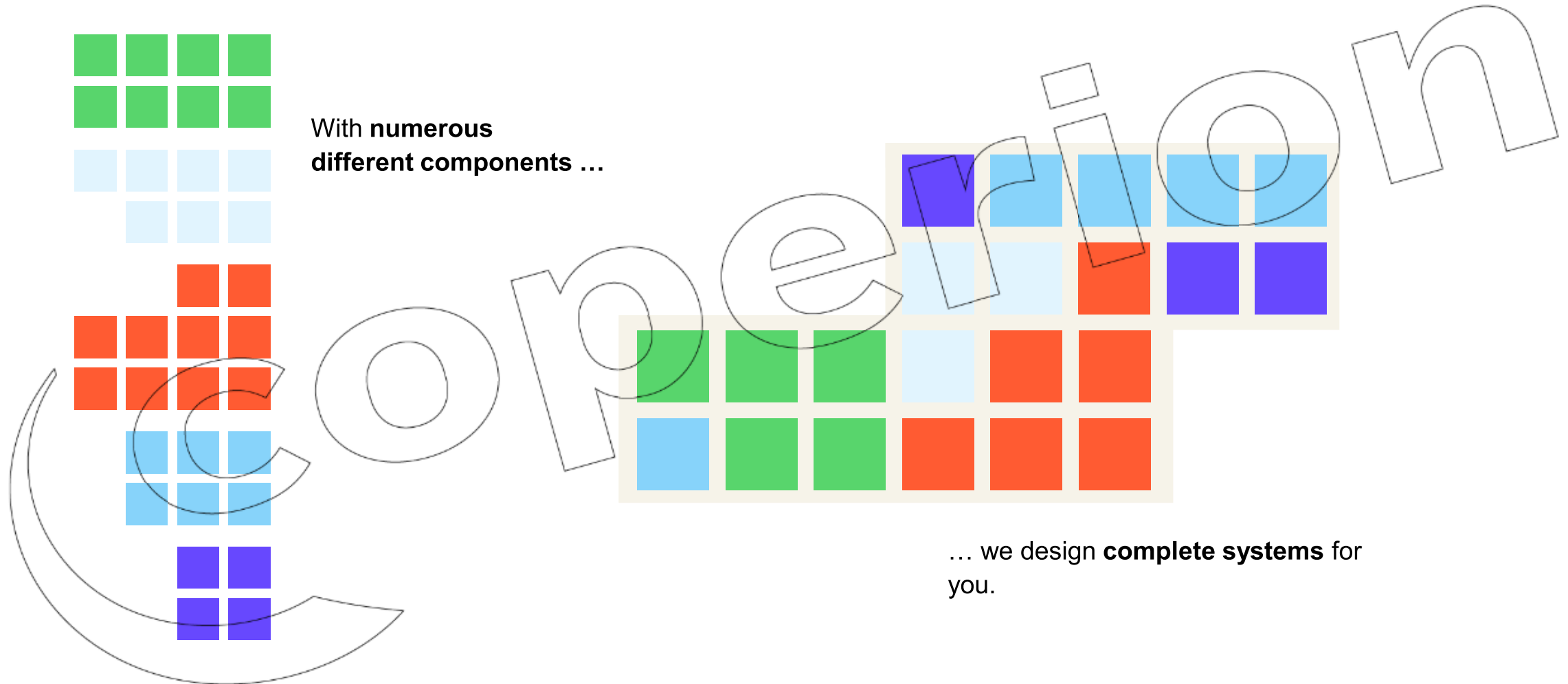
Our Promise
Three divisions for
first-class solutions

From single components to complete systems



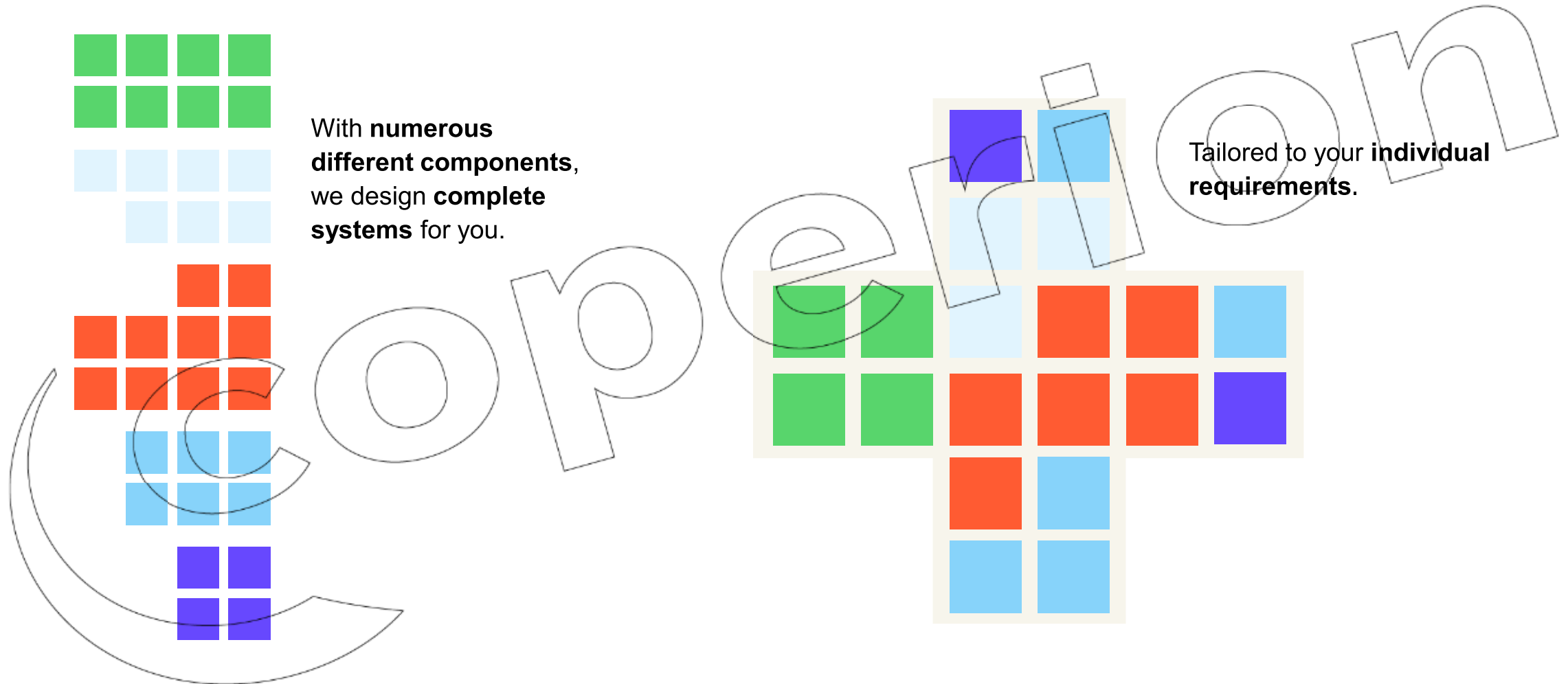
From one source

From single components to complete systems



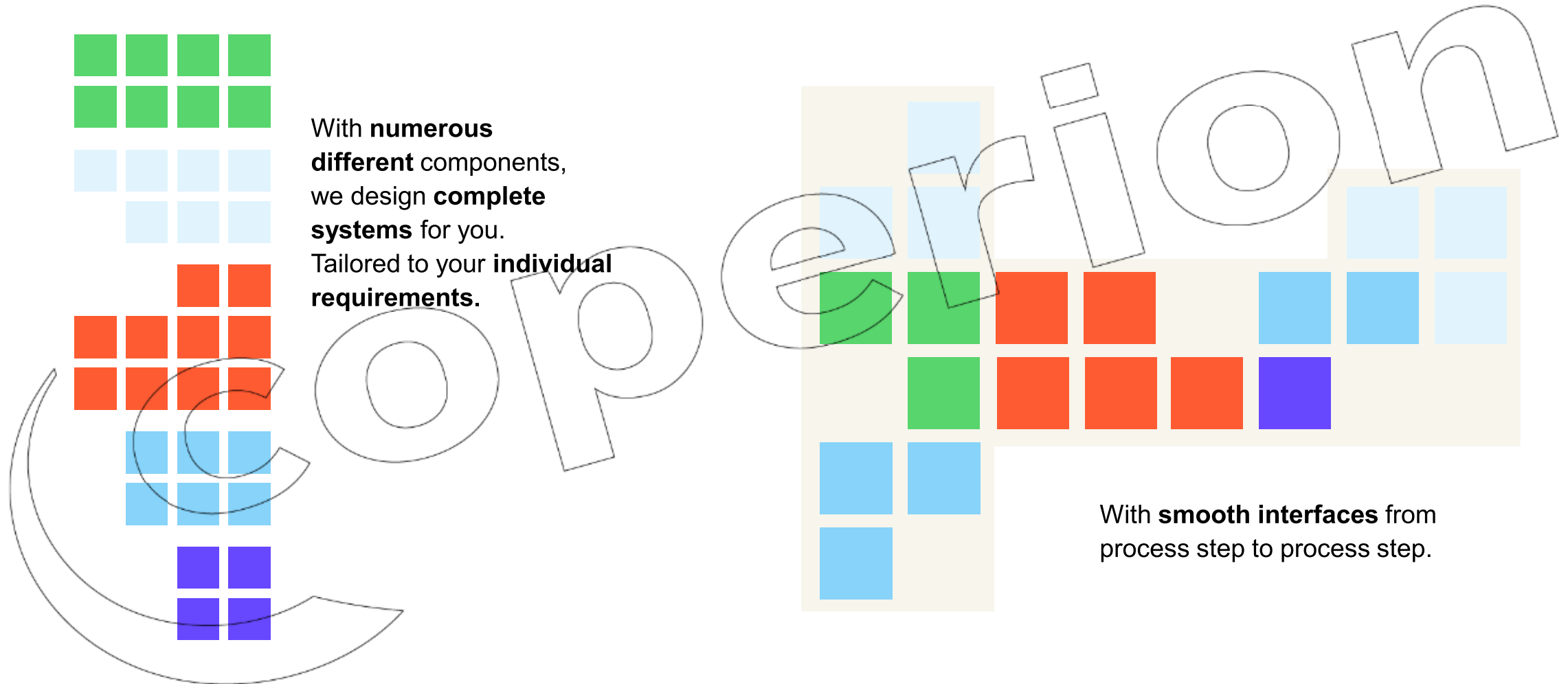
From one source

From single components to complete systems



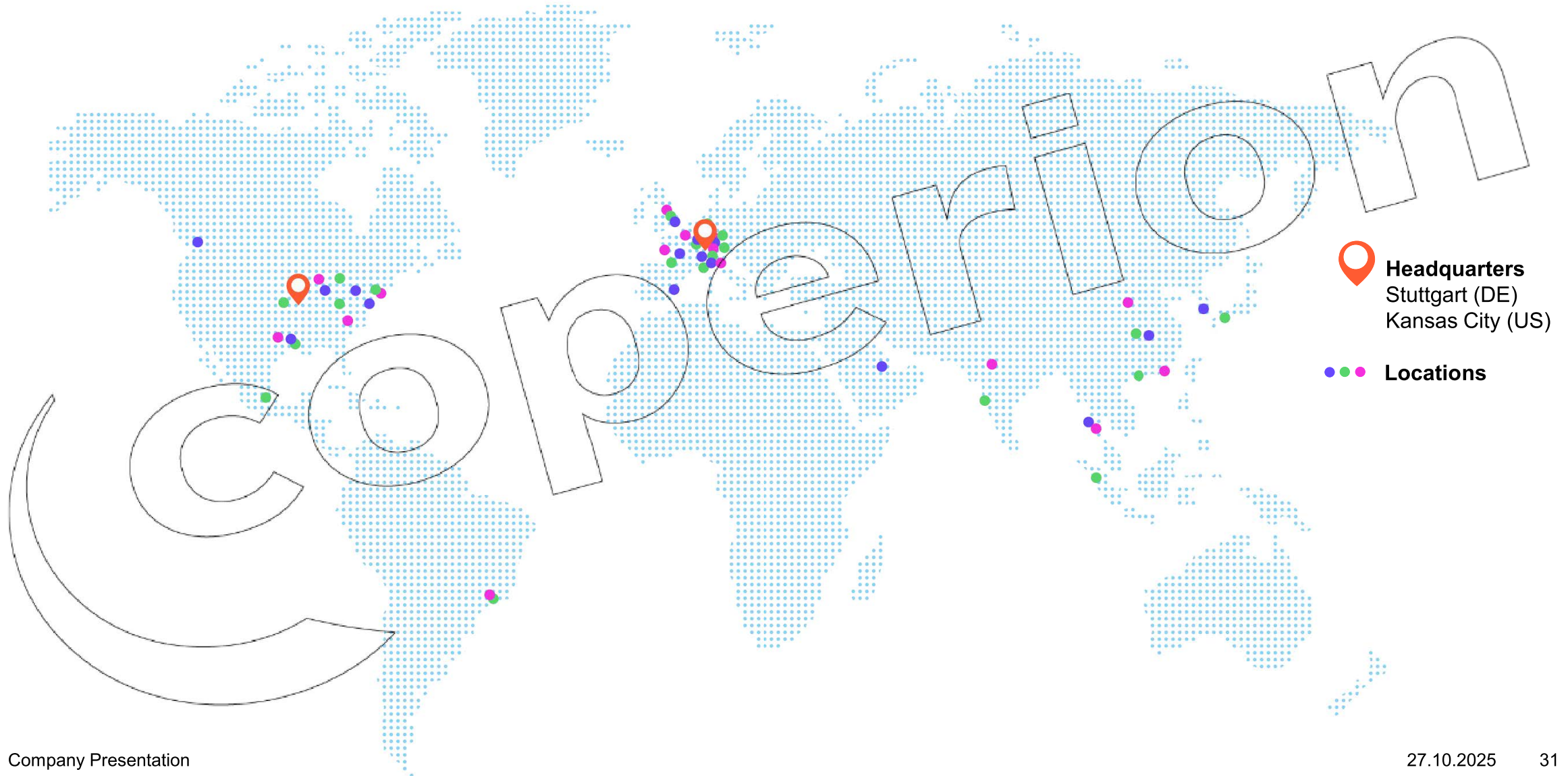
From one source

From single components to complete systems



From one source

The Coperion network



Contact

Dhruv Lad

Sales Director

590 Woodbury Glassboro Road

Sewell, NJ 08080

+ (201) 419 0428

Dhruv.Lad@coperion.com

www.coperion.com

Thank you for your attention.

You're very welcome to follow us.

For Performance Materials



For Food, Health and Nutrition



Thank you for your attention.

For Performance Materials



For Food, Health and Nutrition



Brands of Coperion

