



**coperion**

## SERVICE PRESENTATION

**Shamsher Singh Raina**

**Vice President – Sales and Service**

**Coperion Ideal Pvt Ltd**

**India**





# Coperion Ideal Pvt Ltd, NOIDA (CID)

## LOCATIONS



**NOIDA —Control Office**

**Greater Noida**

**Mumbai**

**New Delhi**



**All departments**



**Production and Quality Assurance**



**Sales & Service**



**Registered Office**



# Coperion Ideal Pvt Ltd, NOIDA (CID)



## History

**1986**

Agency agreement as IDEAL ENTERPRISES

**1991**

Technical Collaboration agreement with WAESCHLE MASCHINENFABRIK GmbH – IDEAL ENGINEERING PVT. LTD

**1995**

Joint Venture as WAESCHLE IDEAL PVT. LTD., with 60% majority for Ideal

**1997**

Joint Venture as WAESCHLE IDEAL PVT. LTD. with 51% majority for WAESCHLE GmbH

**2001**

Joint Venture takes a new name as COPERION IDEAL as a result of merger between Waeschle GmbH, Werner & Pfleiderer and Buss

**2012**

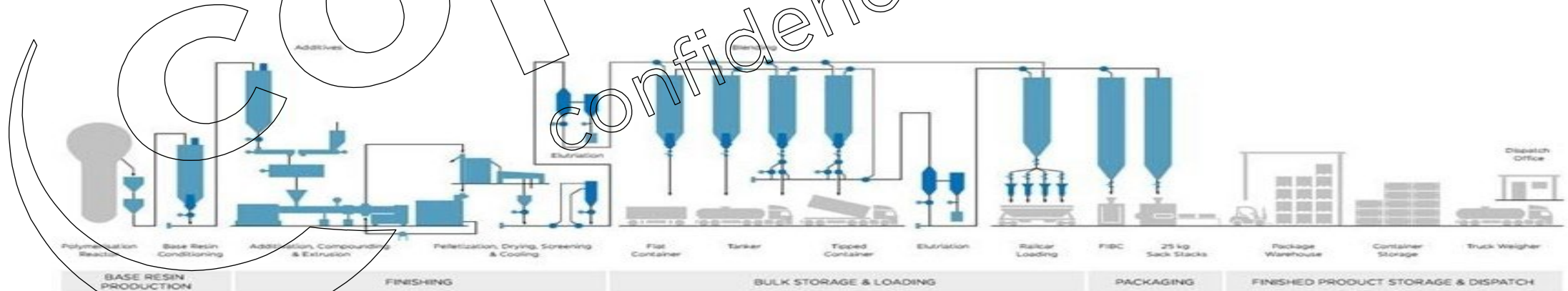
Hillenbrand acquired Coperion

***Journeyed from being an Agent to being a full fledged Design, Engineering, Sales, Manufacturing, Supply & Service provider for all Coperion packages & products***



## Divisions

Polymer Division	
<b>Polyolefin Applications</b>	
CES Extrusion / Mega MTS	Agent /Principal
MPS Materials Handling	Principal
ECK Coperion K-Tron - Polyolefin / Eng. Plastics Feeders	Principal/Agent
<b>Engineering Plastics Applications</b>	
CEP Compounding	Agent
MCP Materials Handling – Compounding Plants	Principal/Agent
Strategic Markets / Aftermarket Sales & Service Division	
<b>Strategic Markets</b>	
ECP Components	Principal
EFD Food & Pharma	-
<b>Aftermarket Sales &amp; Service</b>	
SCE Service Compounding & Extrusion	Agent/ Principal
SCK Service Coperion K-Tron	Principal
SMH Service Materials Handling	Principal





## Business Model

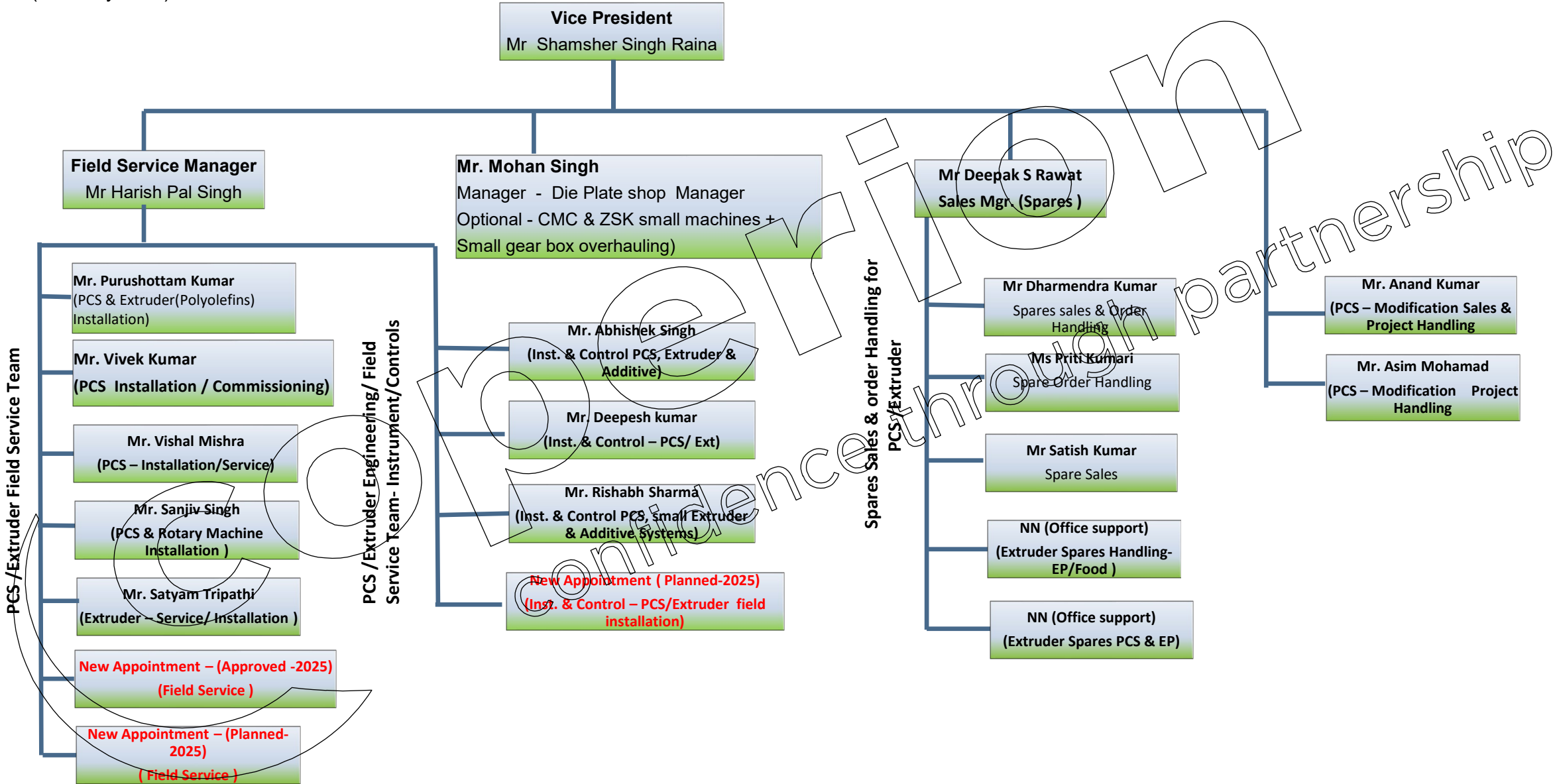






# Coperion India Service Organization

(February 2025)





## CID Spare Parts / Service



### Business updates

- ❖ From 1st Oct, 2024 onwards, Coperion Ideal (CID) starts offering all spares for Small extruder (up to ZSK-133) locally and also in INR currency
- ❖ CID Already offering all spares parts for Conveying packages and Dosing packages in Local INR currency
- ❖ We start preparing data bank to maintain critical spares inventory in Noida based on customer input and past order records for extruders. This includes elements, heaters, coupling, bearings etc
- ❖ From April, 2025 onwards, we will start rate contracts for spares with customers on yearly basis (Jan – Dec) for Extruder parts
- ❖ We set up a new Die plate grinding and overhauling shop in Noida. Machines are Commissioned and our local team is travelling to Coperion Middle east for 2 week training. We plan to start operation from 1st week of April.



## CID Spare Parts / Service



### Die Plate Grinding/Overhauling shop.

Coperion (CID) installed Die plate overhauling shop in Noida which includes following machines :

- Grinding machine – Fully Automatic, CNC based ABA grinding machine MR1500 (Fully A/c )
- Schwing Vacuum Cleaning machine
- Drilling Machine for Die Plate Hole repair work
- Measuring Arm with Table for Die plate surface check
- Die plate Pressure testing Equipments with separate Shed
- Sand Blasting Area
- Storage Area – Fully A/c (In coming Material)
- Die Plate Shop – Layout / Pictures



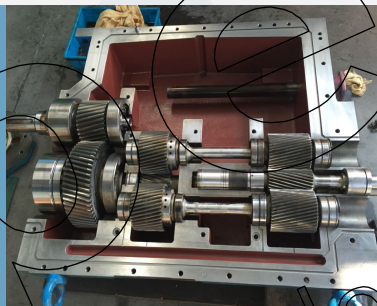


# ➤ CID repair at customer site and In-house

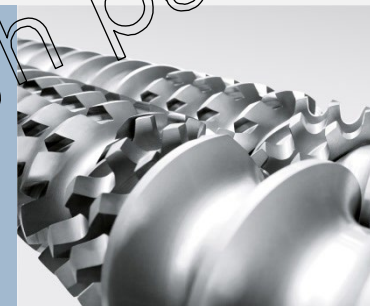
We provide standardized and highly customized service packages for machines and plants. Our maintenance work secures your plant reliability and checks that resources are being deployed efficiently.

**Note : Preparing a new Shop Area in Noida for small gear box overhauling including spare package.**

Overhaul of components, gearboxes, die plates, knife rotors, barrels, controls and weighing technology



Stack-out service (screw exchange)



Preventive maintenance programs

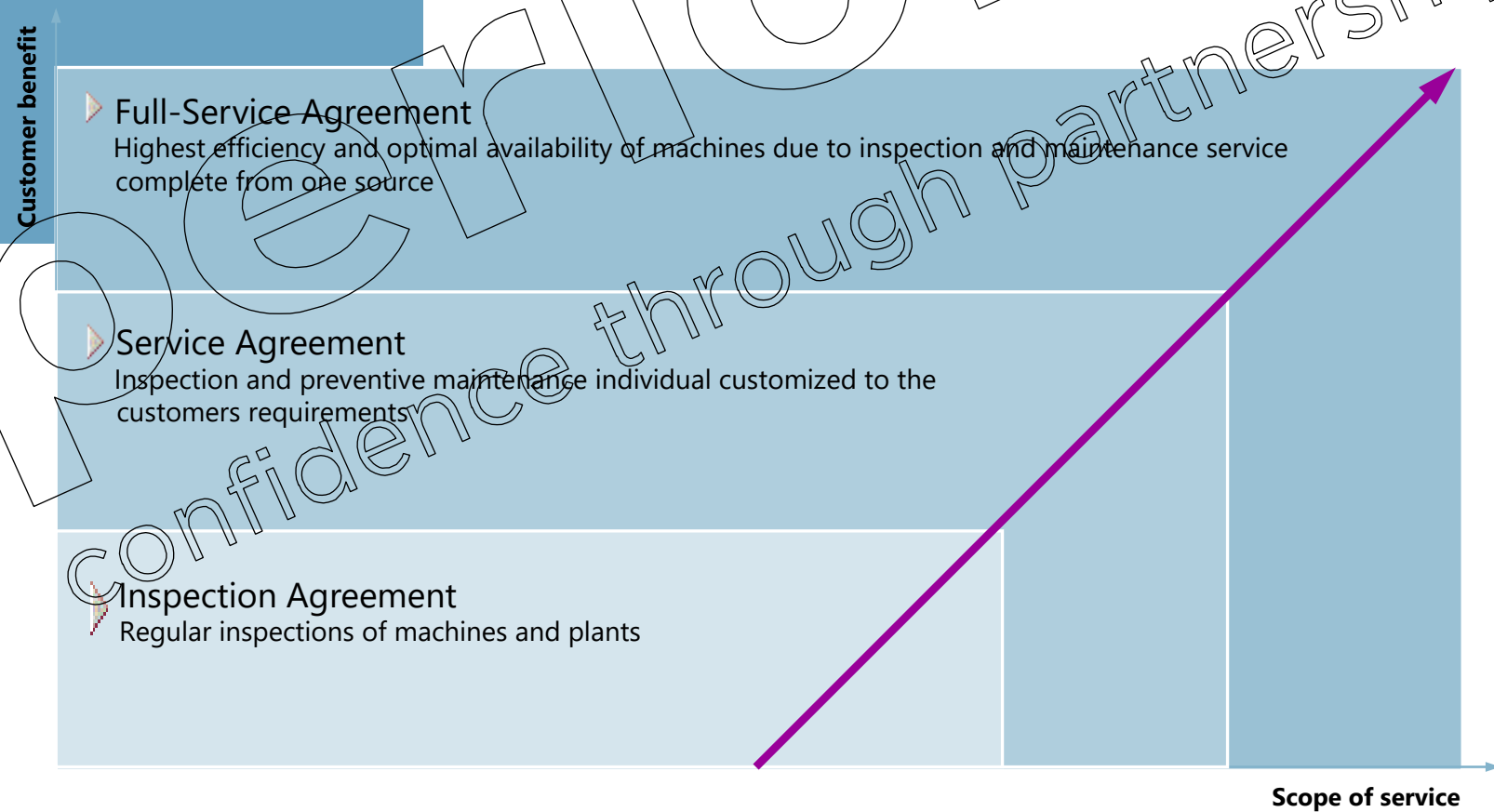


Calibration, mechanical & electrical repair





## Service agreements





# Service Agreement

- Start with an inspection to find out the actual status & condition
- Based on the inspection report, which will be shared by our engineer with customer and Service team, we will decide, if further steps (maintenance or modernization) are recommended or if the Extruder is in a good condition
- **+36 systems** under contract

## Benefits for the customer:

- ✓ Transparent control of all costs (Customer pays only, what has been spent!)
- ✓ Extension of lifetime
- ✓ Predictive maintenance
- ✓ Documentation and certification management (if needed)
- ✓ Inspection by a qualified OEM Coperion engineer







## Process section check-up





# Process section check-up

Each barrel and each screw element will get worn by time.

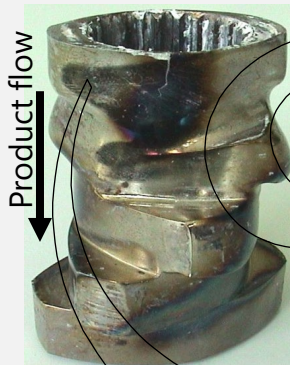
**The lifetime of each part depends on:**

On the location of its installation along the process section

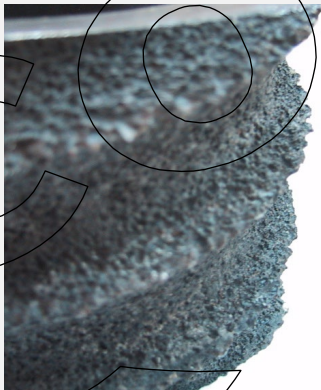
On the screw arrangement itself

On frequency of start and stops and on the operating conditions

The products that are produced



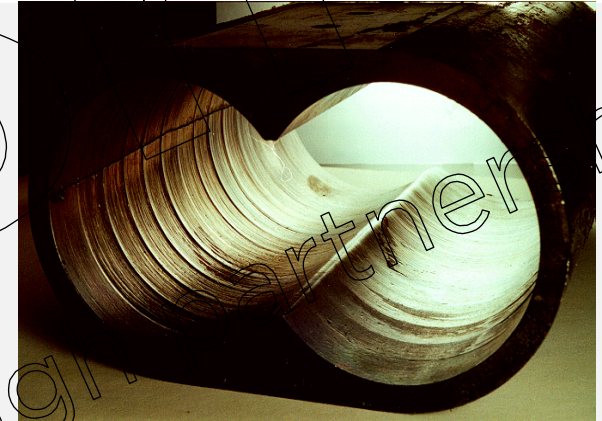
Abrasion



Corrosion



Adhesion





## Process section check-up

### Results of a worn process section

Metal contamination of final product

Reduced mixing capacity

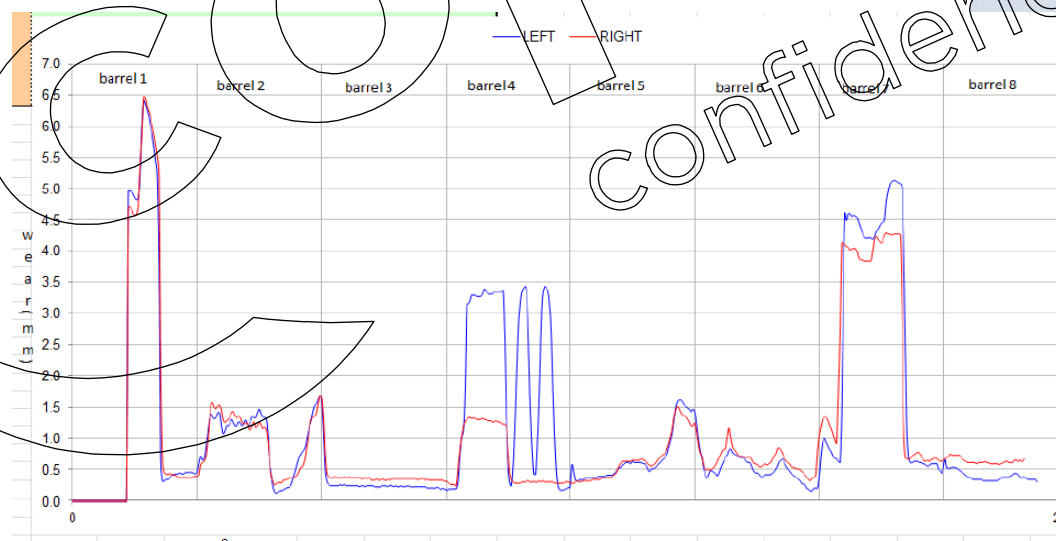
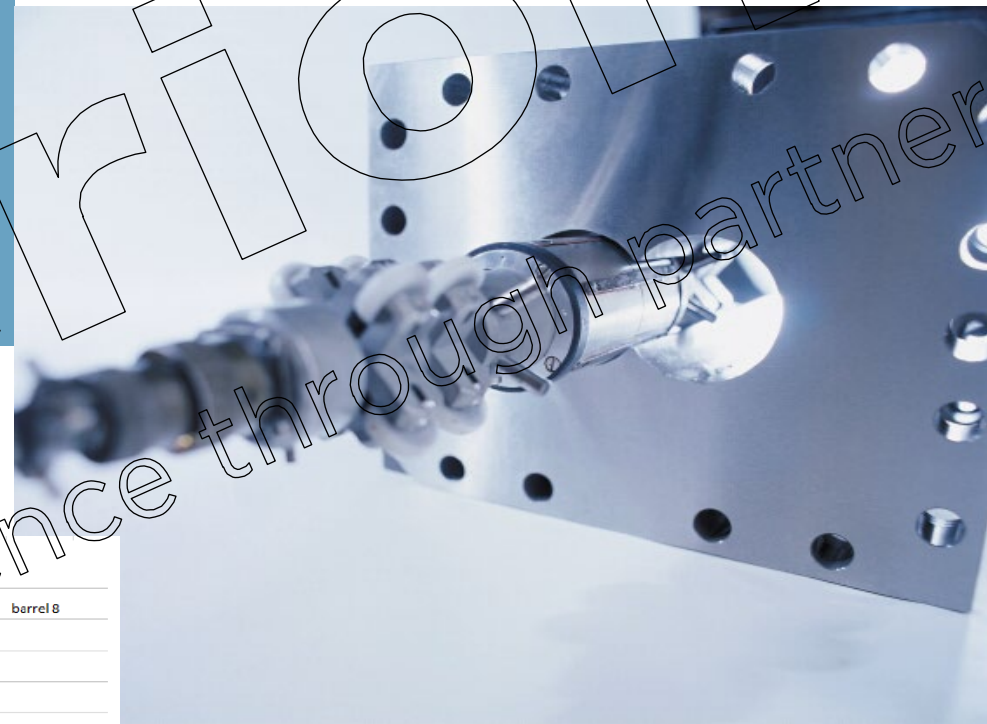
Higher energy consumption







## Barrel Bore Measurement

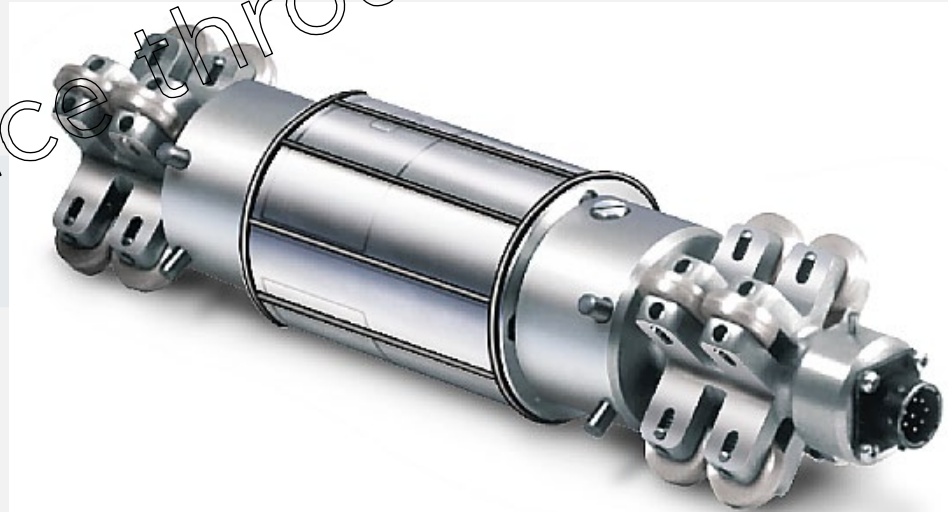




# Barrel Bore Measurement BBM

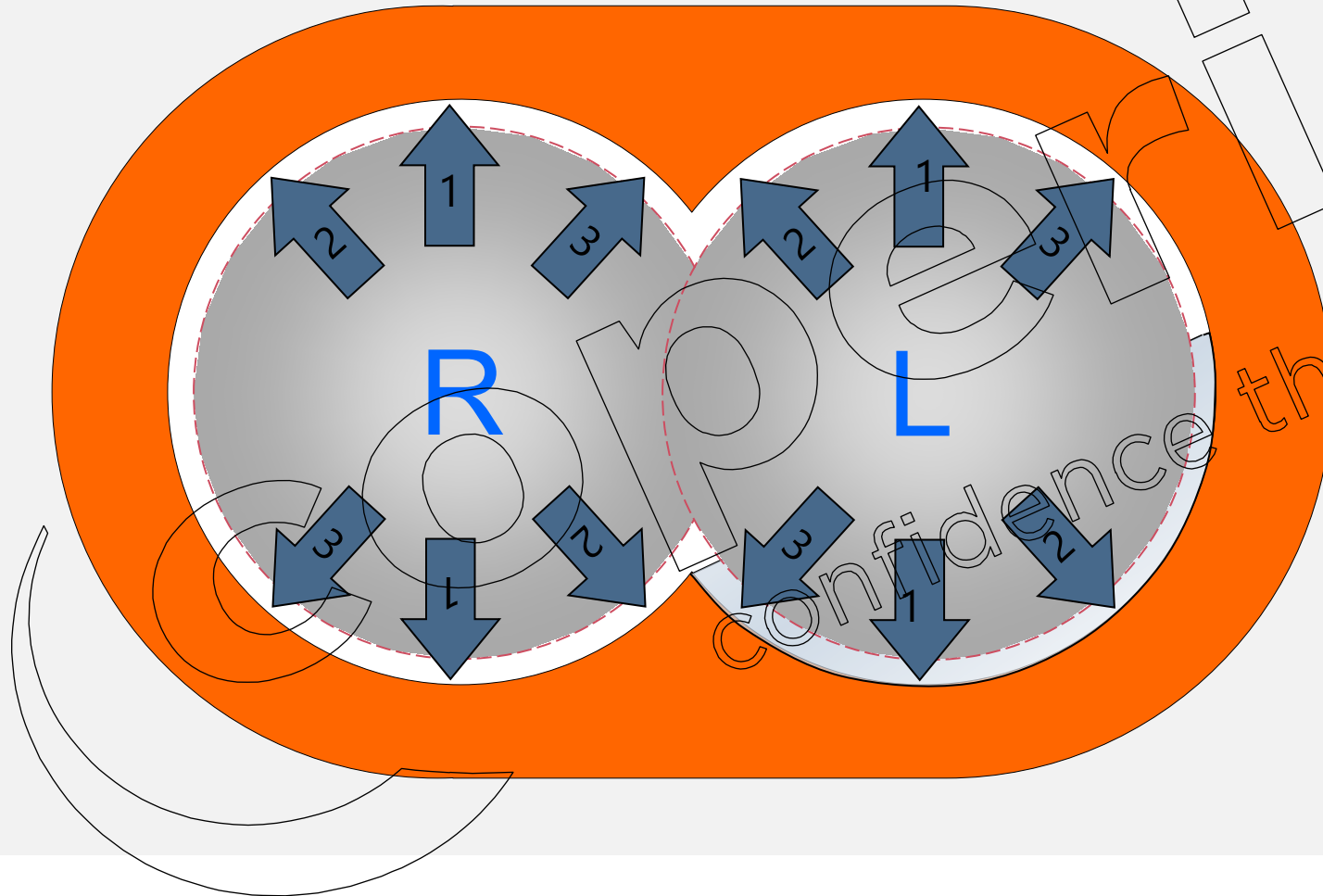
## WHAT WE OFFER?

- Precise measurement of the barrel bore without disassembly of the processing barrels
- Analysis of the discovered defects, reporting and a detailed risk assessment
- Suitable for preventive failure detection to minimize production losses
- Suitable for ZSK 26 to ZSK 177





# Barrel Bore Measurement BBM



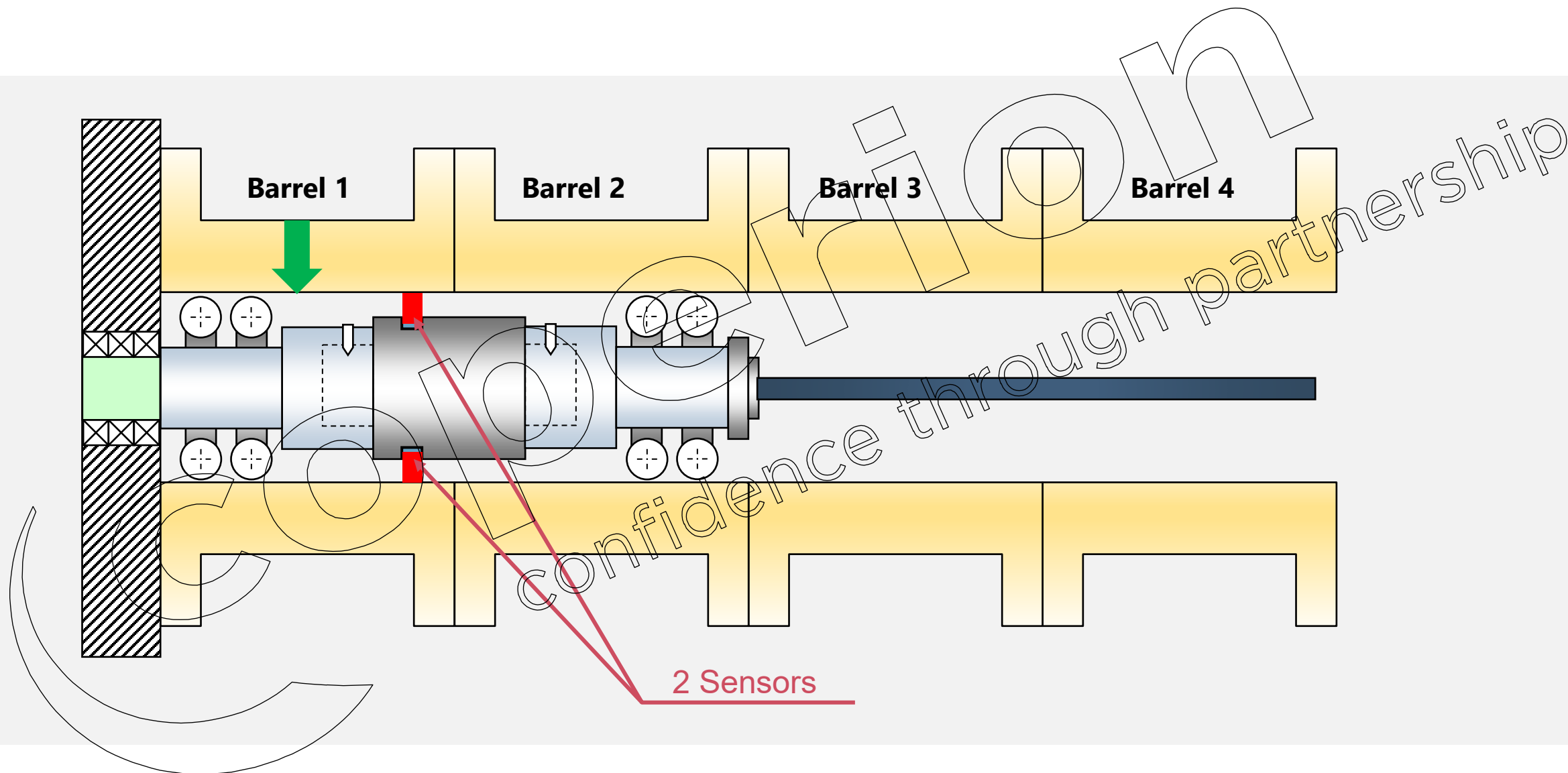
3 measurements in every bore

One measurement every 5 mm





# Barrel Bore Measurement BBM





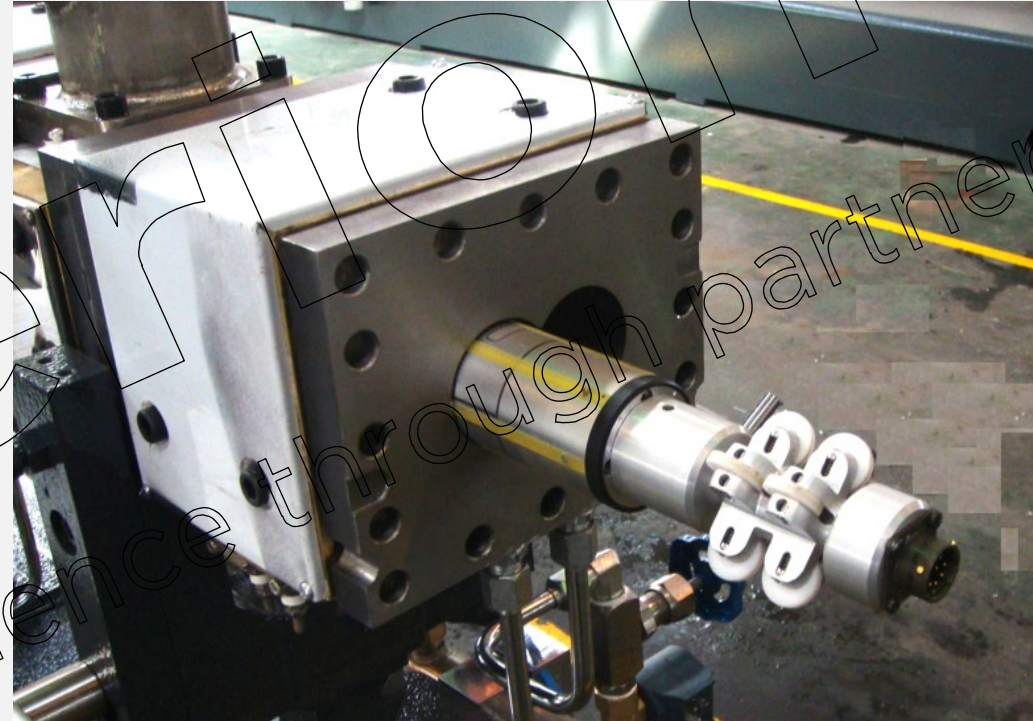
# Barrel Bore Measurement BBM

## Preconditions:

Screw shaft removed

Barrel inner surface cleaned

Extruder at ambient temperature



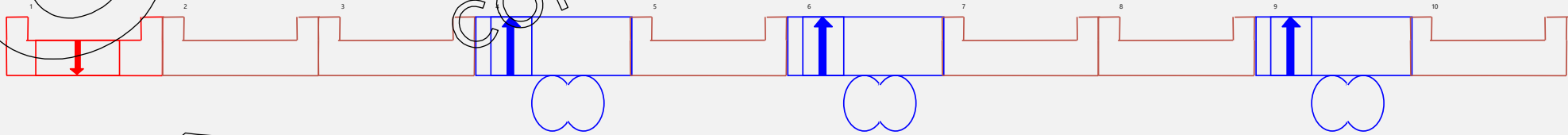
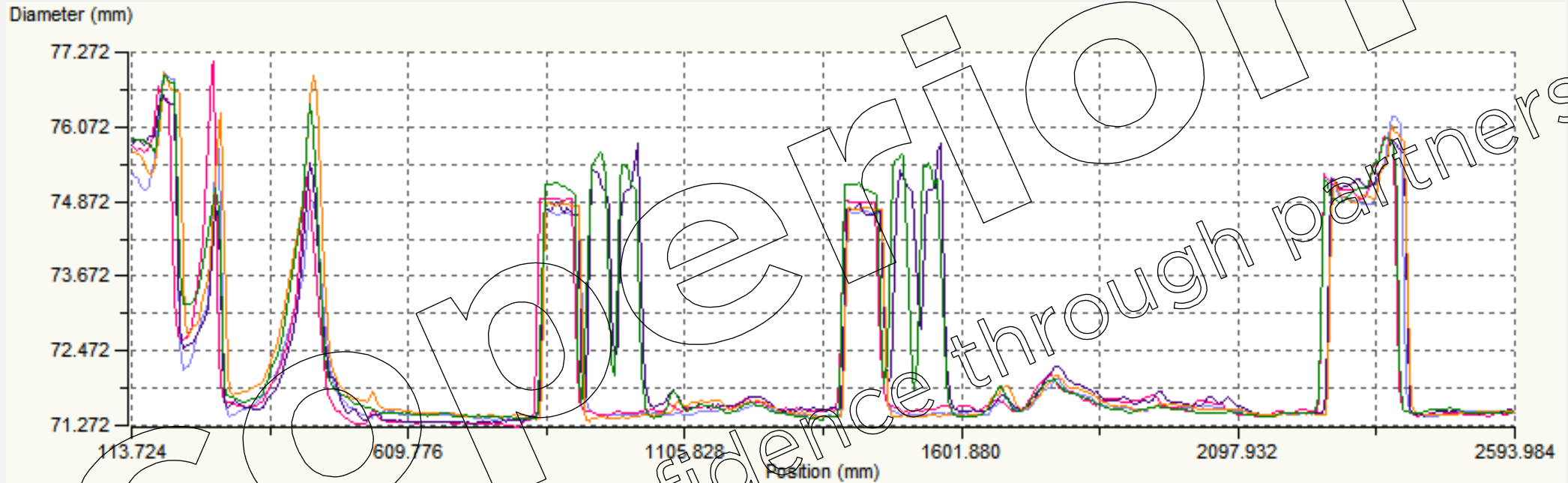
**First BBM recommended after 3 years production**

**It takes 1 hour to measure an extruder after proper cleaning of barrels from Inside**

**NOTE : This machine is under order and will be delivered by end of July 2025.**



# Barrel Bore Measurement BBM



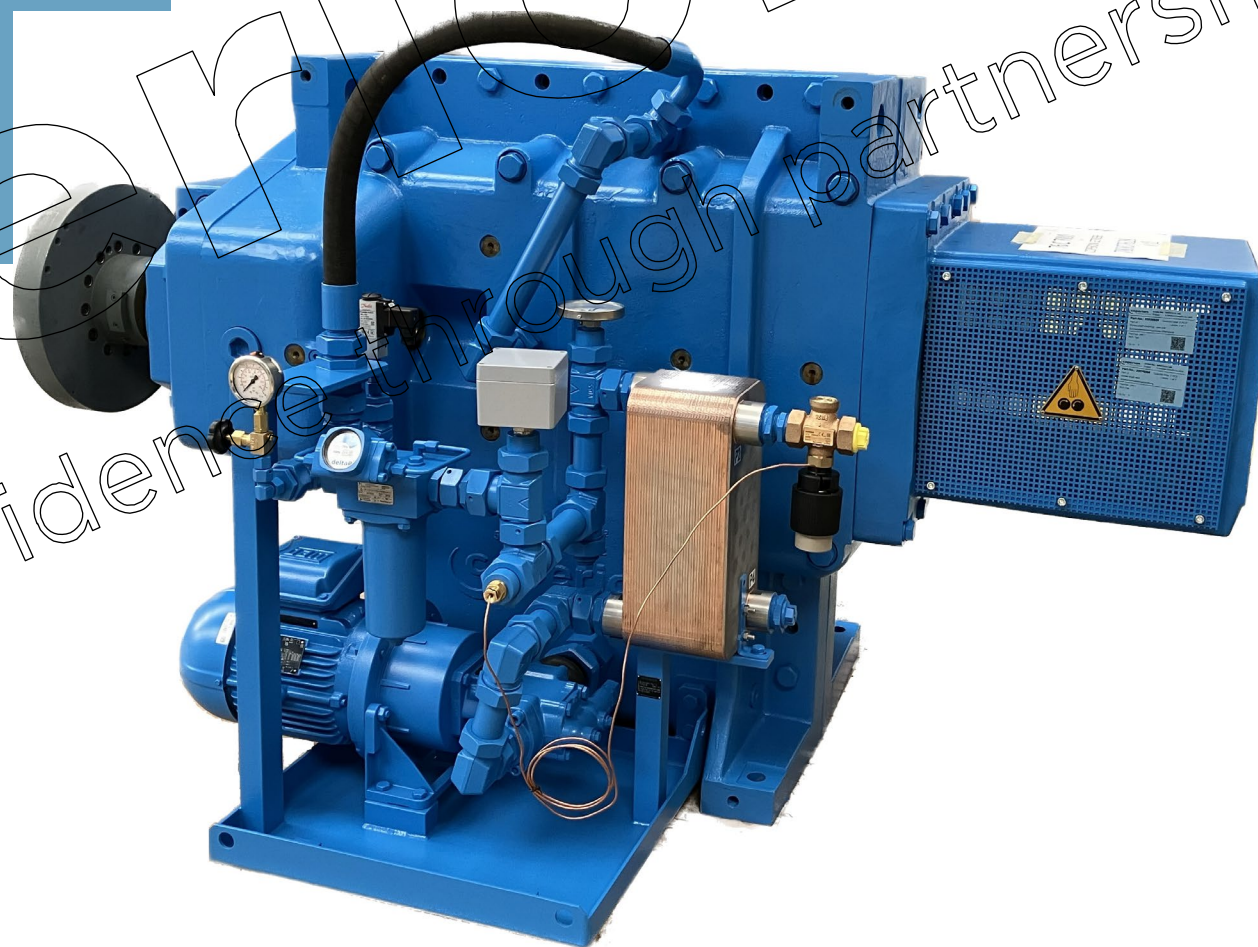
Data also available as .xls file

CID can be checked at the same time



Gearbox

Preventive maintenance







# Gearbox preventive maintenance

## **Coperion recommends gearbox overhaul after 5 years of operation**

Replace all bearings and seals

Check gearwheel tolerances

Magnetic particle test of all shafts/Gears

Check timing of output shafts

Assembly and none load test run



# Gearbox preventive maintenance

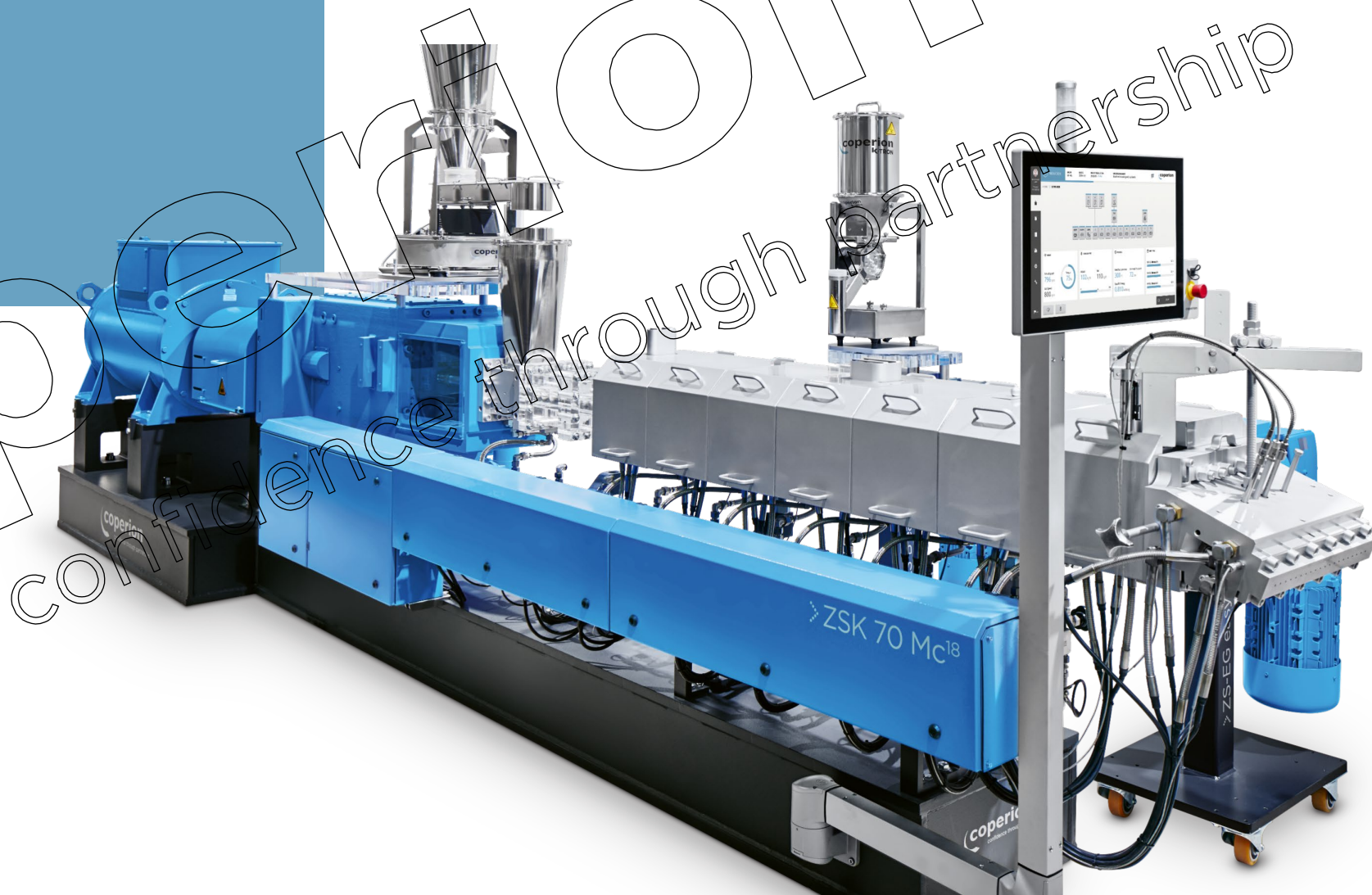
Saving money on maintenance can become costly







Modernization





# Modernization

OLD



NEW



OLD



NEW



## Modernization of existing machines

- Improve Operator Safety
- Increase reliability
- Increase throughput
- Reduce energy consumption
- Eliminate bottlenecks
- Replace obsolete equipment (control systems)



THANK YOU VERY MUCH  
FOR YOUR ATTENTION.

You're very welcome to follow us.



coperion  
confidence through partnership